

# Anti-Sox2 antibody



Catalog Number: 105189

## Product name

Anti-Sox2 antibody

## Specificity

Human Sox2

## Antibody description

Rabbit polyclonal to Sox2

## Preparation

Produced in rabbits immunized with a synthetic peptide corresponding to the center region of the Human Sox2, and purified by antigen affinity chromatography.

## Formulation

0.2 µm filtered solution in PBS

## Storage

This antibody can be stored at 2°C-8°C for one month without detectable loss of activity. Antibody products are stable for twelve months from date of receipt when stored at -20°C to -80°C.

Preservative-Free.

Sodium azide is recommended to avoid contamination (final concentration 0.05%-0.1%). It is toxic to cells and should be disposed of properly. Avoid repeated freeze-thaw cycles.

## Clonality

Polyclonal

## Ig Type

Rabbit IgG

## Applications

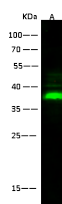
WB, IHC-P

## Dilutions

WB: 0.2-1 µg/ml

IHC-P: 0.1-2 µg/mL

## Validations



Items	Lanes	A
Sample (whole cell lysate)		HES59
Sample Volume (µg/lane)		30
Gel		13% SDS-PAGE reducing gel
Recommended Concentration		0.2-1 µg/ml
Secondary Antibody		Dylight 800-labeled Antibody To Rabbit IgG (H+L), at 1:5000 dilution.
		Developed using Odyssey imaging system.
Explanation		Predicted band size : 34 kDa Observed band size : 37 kDa

## Sox2 Antibody, Rabbit PAb, Antigen Affinity Purified, Western blot



## Sox2 Antibody, Rabbit PAb, Antigen Affinity Purified, Immunohistochemistry

Immunochemical staining of human SOX2 in human trachea with rabbit polyclonal antibody (1 µg/mL, formalin-fixed paraffin embedded sections).