

# Anti-FOXF1 antibody



Catalog Number: 141189

---

## Product name

Anti-FOXF1 antibody

## Specificity

Human FOXF1

## Antibody description

Rabbit Polyclonal to Human FOXF1

## Preparation

Produced in rabbits immunized with a synthetic peptide corresponding to the C-terminus of the Human FOXF1, and purified by antigen affinity chromatography.

## Formulation

0.2  $\mu$ m filtered solution in PBS

## Storage

This antibody can be stored at 2°C-8°C for one month without detectable loss of activity. Antibody products are stable for twelve months from date of receipt when stored at -20°C to -80°C.

Preservative-Free.

Sodium azide is recommended to avoid contamination (final concentration 0.05%-0.1%). It

is toxic to cells and should be disposed of properly. Avoid repeated freeze-thaw cycles.

## Clonality

Polyclonal

## Ig Type

Rabbit IgG

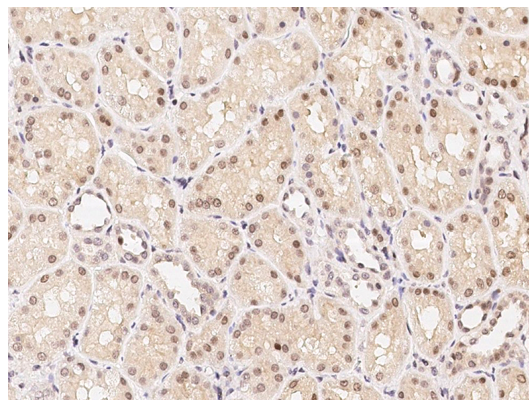
## Applications

IHC-P

## Dilutions

IHC-P: 0.5-5 $\mu$ g/mL

## Validations



Human FOXF1 Immunohistochemistry(IHC) 15707