

# Anti-Complexin-2/CPLX2 antibody



Catalog Number: 100189

## Product name

Anti-Complexin-2/CPLX2 antibody

## Immunogen

[Human Complexin-2/CPLX2 \(His Tag\) recombinant protein](#)

## Specificity

Human Complexin-2 / CPLX2

## Antibody description

Rabbit monoclonal to Complexin-2/CPLX2

## Preparation

This antibody was obtained from a rabbit immunized with purified, recombinant Human Complexin-2 / CPLX2 (rh Complexin-2 / CPLX2; Q6PUV4-1; Asp2-Lys134).

## Formulation

0.2 µm filtered solution in PBS

## Storage

This antibody can be stored at 2°C-8°C for one month without detectable loss of activity. Antibody products are stable for twelve months from date of receipt when stored at -20°C to -80°C. Preservative-Free. Sodium azide is recommended to avoid contamination (final concentration 0.05%-0.1%). It is toxic to cells and should be disposed of properly. Avoid repeated freeze-thaw cycles.

## Clonality

Monoclonal

## Ig Type

Rabbit IgG

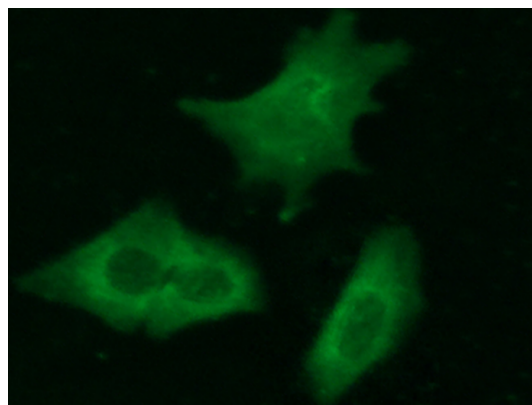
## Applications

IF, ICC/IF

## Dilutions

ICC/IF: 10-25 µg/mL

## Validations



Complexin-2 / CPLX2 Antibody, Rabbit MAb, Immunofluorescence

Immunofluorescence staining of CPLX2 in SHSY5Y cells. Cells were fixed with 4% PFA, permeabilized with 0.3% Triton X-100 in PBS, blocked with 10% serum, and incubated with rabbit anti-human CPLX2 monoclonal antibody (15 µg/ml) at 4°C overnight. Then cells were stained with the Alexa Fluor® 488-conjugated Goat Anti-rabbit IgG secondary antibody (green).