

Cathepsin D antibody



Catalog Number: 108889

Product name

Cathepsin D antibody

Specificity

Human, Mouse; other species not tested.

Antibody description

Cathepsin D Rabbit Polyclonal antibody. Positive IHC detected in human breast cancer tissue, human brain tissue. Positive WB detected in human brain tissue, A431 cells, HepG2 cells. Observed molecular weight by Western-blot: 32kd

Preparation

This antibody was obtained by immunization of Peptide (Accession Number: NM_001909). Purification method: Antigen affinity purified.

Formulation

PBS with 0.02% sodium azide and 50% glycerol pH 7.3.

Storage

Store at -20°C. DO NOT ALIQUOT

Clonality

Polyclonal

Ig Type

Rabbit IgG

Applications

ELISA, WB, IHC

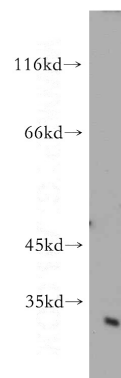
Dilutions

Recommended Dilution:

WB: 1:200-1:2000

IHC: 1:20-1:200

Validations



human brain tissue were subjected to SDS PAGE followed by western blot with Catalog No:108889(CTSD antibody) at dilution of 1:500