

# Anti-CCT2 Rabbit antibody



Catalog Number: 167889

## Product name

Anti-CCT2 Rabbit antibody

## Specificity

Human, Mouse, Rat

## Antibody description

CCT2 Rabbit monoclonal antibody

## Preparation

Antigen: A synthetic peptide of human CCT2

## Formulation

50nM Tris-Glycine(pH 7.4), 0.15M NaCl, 40%Glycerol, 0.01% sodium azide and 0.05% BSA

## Storage

Store at 4°C short term. Store at -20°C long term. Avoid freeze / thaw cycle.

## Clonality

Monoclonal

## Ig Type

Rabbit IgG

## Applications

WB, IHC-P, ICC/IF, FC, IP

## Dilutions

WB: 1/2000-1/10000

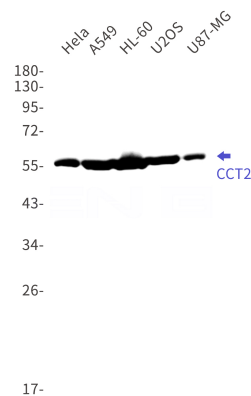
IHC: 1/50

ICC/IF: 1/50

FC: 1/20

IP: 1/20

## Validations



Western blot detection of CCT2 in HeLa, A549, HL-60, U2OS, U87-MG cell lysates using CCT2 Rabbit mAb(1:1000 diluted). Predicted band size: 57kDa. Observed band size: 57kDa.