

Anti-Phospho-p44/42 MAPK (ERK1/2) (Tyr204) Rabbit antibody



Catalog Number: 166889

Product name

Anti-Phospho-p44/42 MAPK (ERK1/2) (Tyr204)
Rabbit antibody

Specificity

Human, Mouse, Rat

Antibody description

Phospho-p44/42 MAPK (ERK1/2) (Tyr204) Rabbit polyclonal antibody

Preparation

Antigen: Peptide sequence around phosphorylation site of tyrosine 204 (T-E-Y(p)-V-A) derived from Human p44/42 MAP Kinase.

Formulation

Supplied at 1.0mg/mL in phosphate buffered saline (without Mg²⁺ and Ca²⁺), pH 7.4, 150mM NaCl, 0.02% sodium azide and 50% glycerol.

Storage

Store at 4°C short term. Store at -20°C long term. Avoid freeze / thaw cycle.

Clonality

Polyclonal

Ig Type

Rabbit IgG

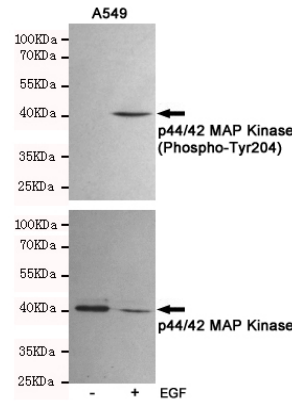
Applications

WB, IHC-P, ICC/IF

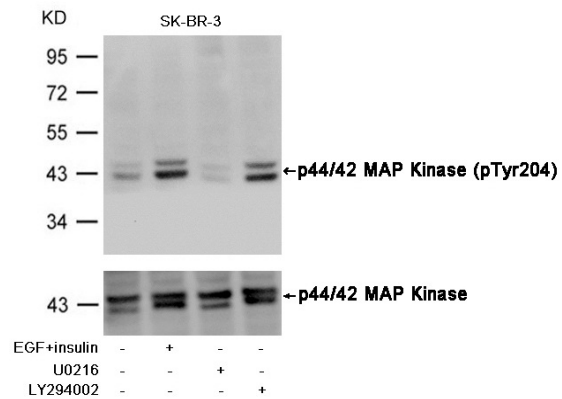
Dilutions

WB:1/500-1/1000 ICC:1/100-1/200 IHC:1/50-1/100

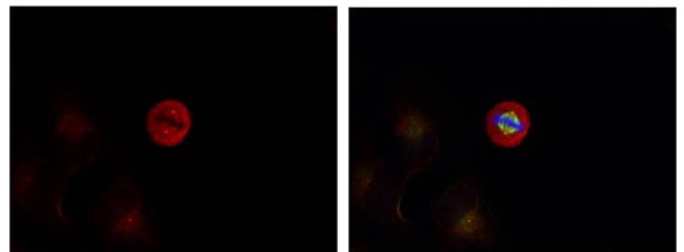
Validations



Western blot analysis of extracts from A549 cells, untreated or treated with EGF(10ng/ml,10min), using p44/42 MAP Kinase (Phospho-Tyr204) Rabbit pAb (166889,1:500 diluted,upper) and p44/42 MAPK (Erk1/2) Mouse mAb (201246,1:1000 diluted,lower).



Western blot analysis of extracts from SK-BR-3 cells, treated with insulin and EGF, and pretreated with U0126 and LY294002 cells using p44/42 MAP Kinase (Phospho-Tyr204) Antibody .

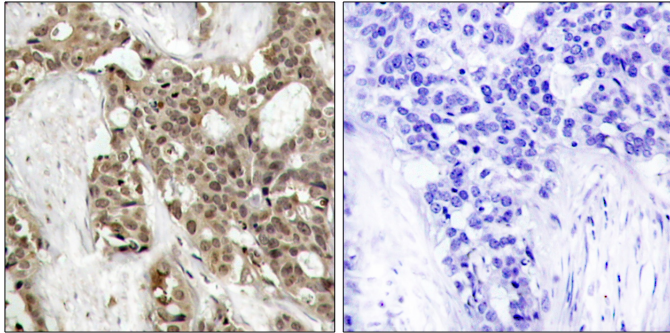


Immunofluorescence staining of methanol-fixed HeLa cells showing centrosome and nuclear staining using p44/42 MAP Kinase (Phospho-Tyr204) Antibody .

Anti-Phospho-p44/42 MAPK (ERK1/2) (Tyr204) Rabbit antibody



Catalog Number: 166889



Immunohistochemical analysis of paraffin-embedded human breast carcinoma tissue using p44/42 MAP Kinase (Phospho-Tyr204) Antibody (left) or the same antibody preincubated with blocking peptide #51246 (right).