

RPL31 antibody



Catalog Number: 114889

Product name

RPL31 antibody

Specificity

Human, Mouse, Rat; other species not tested.

Antibody description

RPL31 Rabbit Polyclonal antibody. Positive WB detected in HepG2 cells, mouse liver tissue, NIH/3T3 cells. Positive IF detected in HepG2 cells. Observed molecular weight by Western-blot: 14 kDa

Preparation

This antibody was obtained by immunization of RPL31 recombinant protein (Accession Number: NM_000993). Purification method: Antigen affinity purified.

Formulation

PBS with 0.02% sodium azide and 50% glycerol pH 7.3.

Storage

Store at -20°C. DO NOT ALIQUOT

Clonality

Polyclonal

Ig Type

Rabbit IgG

Applications

ELISA, WB, IF

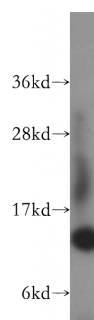
Dilutions

Recommended Dilution:

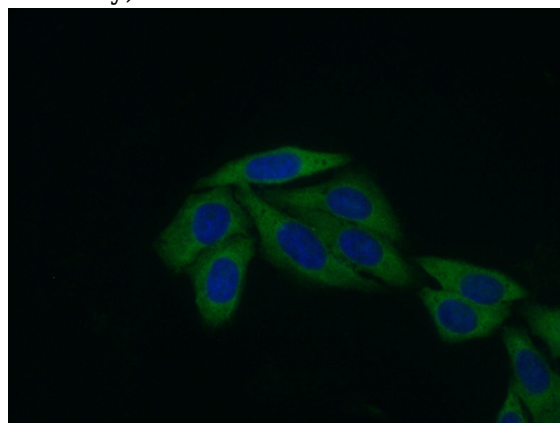
WB: 1:200-1:2000

IF: 1:50-1:500

Validations



HepG2 cells were subjected to SDS PAGE followed by western blot with Catalog No:114889(RPL31 antibody) at dilution of 1:300



Immunofluorescent analysis of (10% Formaldehyde) fixed HepG2 cells using Catalog No:114889(RPL31 Antibody) at dilution of 1:50 and Alexa Fluor 488-conjugated AffiniPure Goat Anti-Rabbit IgG(H+L)