

# B4GALT3 Polyclonal Antibody



Catalog Number: 160889

## Product name

B4GALT3 Polyclonal Antibody

## Specificity

Human, Mouse, Rat

## Antibody description

Polyclonal antibody to B4GALT3

## Preparation

Antigen: A synthetic peptide of human B4GALT3

## Formulation

PBS with 0.02% sodium azide, 50% glycerol, pH7.3.

## Storage

Store at -20°C. Avoid freeze / thaw cycles.

## Clonality

Polyclonal

## Ig Type

Rabbit IgG

## Applications

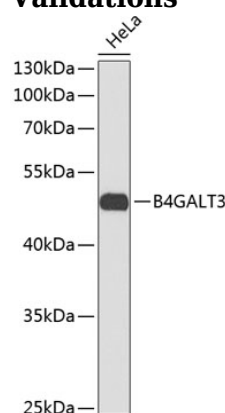
WB, IHC

## Dilutions

WB 1:500 - 1:2000

IHC 1:50 - 1:100

## Validations



Western blot - B4GALT3 Polyclonal Antibody

Western blot analysis of extracts of HeLa cells, using B4GALT3 antibody. Secondary antibody: HRP Goat Anti-Rabbit IgG (H+L) at 1:10000 dilution. Lysates/proteins: 25ug per lane. Blocking buffer: 3% nonfat dry milk in TBST.