

BEX2 antibody

Catalog Number: 108489

Product name

BEX2 antibody

Specificity

Human, Mouse, Rat; other species not tested.

Antibody description

BEX2 Rabbit Polyclonal antibody. Positive WB detected in human brain tissue. Positive IHC detected in human medulloblastoma tissue. Observed molecular weight by Western-blot: 10-15kd

Preparation

This antibody was obtained by immunization of BEX2 recombinant protein (Accession Number: NM_032621). Purification method: Antigen affinity purified.

Formulation

PBS with 0.02% sodium azide and 50% glycerol pH 7.3.

Storage

Store at -20°C. DO NOT ALIQUOT

Clonality

Polyclonal

Ig Type

Rabbit IgG

Applications

ELISA, WB, IHC

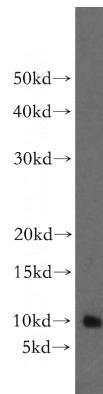
Dilutions

Recommended Dilution:

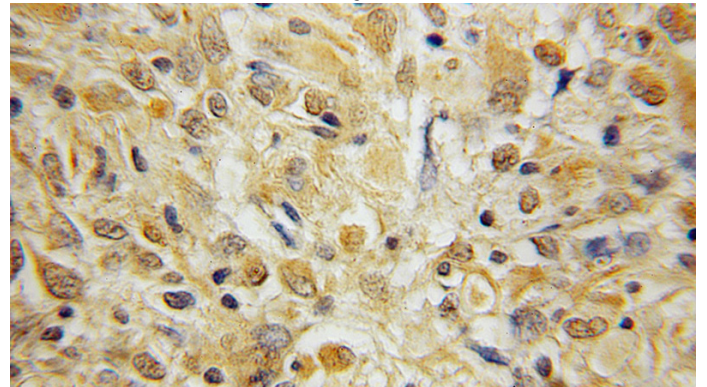
WB: 1:200-1:2000

IHC: 1:20-1:200

Validations



human brain tissue were subjected to SDS PAGE followed by western blot with Catalog No:117134(BEX2 antibody) at dilution of 1:500



Immunohistochemical of paraffin-embedded human medulloblastoma using Catalog No:117134(BEX2 antibody) at dilution of 1:100 (under 10x lens)