

tubulin-gamma antibody



Catalog Number: 116489

Product name

tubulin-gamma antibody

Specificity

Human, Dog, Mouse; other species not tested.

Antibody description

tubulin-gamma Rabbit Polyclonal antibody.
Positive WB detected in mouse brain tissue, HeLa cells. Positive IF detected in MDCK cells.
Observed molecular weight by Western-blot: 50-55 kDa

Preparation

This antibody was obtained by immunization of tubulin-gamma recombinant protein (Accession Number: NM_001070). Purification method: Antigen affinity purified.

Formulation

PBS with 0.1% sodium azide and 50% glycerol pH 7.3.

Storage

Store at -20°C. DO NOT ALIQUOT

Clonality

Polyclonal

Ig Type

Rabbit IgG

Applications

ELISA, IF, WB

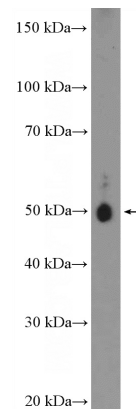
Dilutions

Recommended Dilution:

WB: 1:200-1:2000

IF: 1:20-1:200

Validations



mouse brain tissue were subjected to SDS PAGE followed by western blot with Catalog No:116489(tubulin-gamma Antibody) at dilution of 1:600

Immunofluorescent analysis of (-20oc Ethanol) fixed MDCK cells using Catalog No:116489(tubulin-gamma Antibody) at dilution of 1:100 and Alexa Fluor 488-conjugated AffiniPure Goat Anti-Rabbit IgG(H+L)