

SOCS3 antibody



Catalog Number: 115489

Product name

SOCS3 antibody

WB: 1:200-1:2000

IP: 1:200-1:2000

Specificity

Human, Mouse, Rat; other species not tested.

IHC: 1:20-1:200

IF: 1:10-1:100

Antibody description

SOCS3 Rabbit Polyclonal antibody. Positive WB detected in K-562 cells, A375 cells. Positive IP detected in K-562 cells. Positive IF detected in Hela cells, HepG2 cells. Positive IHC detected in human placenta tissue, human heart tissue. Observed molecular weight by Western-blot: 30 kDa

Preparation

This antibody was obtained by immunization of S^oCS3 recombinant protein (Accession Number: NM_001378933). Purification method: Antigen affinity purified.

Formulation

PBS with 0.02% sodium azide and 50% glycerol pH 7.3.

Storage

Store at -20°C. DO NOT ALIQUOT

Clonality

Polyclonal

Ig Type

Rabbit IgG

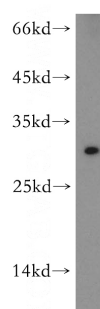
Applications

ELISA, IHC, WB, IF, IP

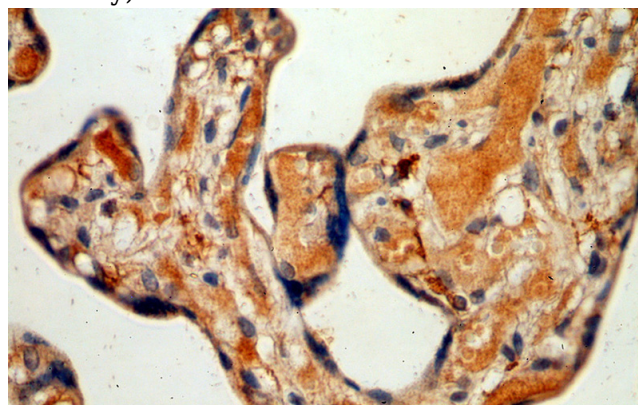
Dilutions

Recommended Dilution:

Validations



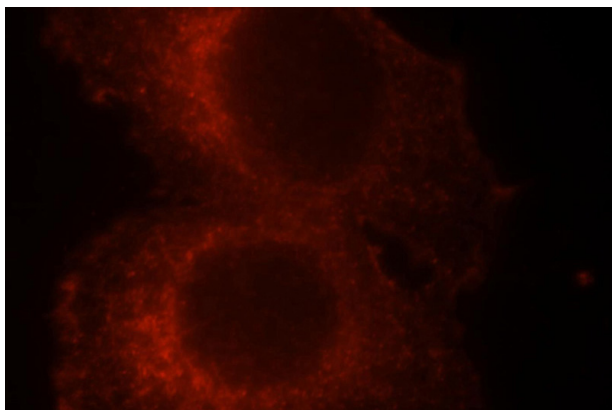
K-562 cells were subjected to SDS PAGE followed by western blot with Catalog No:115489(SocS3 antibody) at dilution of 1:500



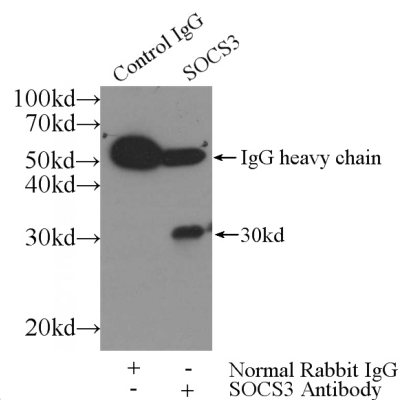
Immunohistochemical of paraffin-embedded human placenta using Catalog No:115489(SocS3 antibody) at dilution of 1:50 (under 40x lens)

SOCS3 antibody

Catalog Number: 115489



Immunofluorescent analysis of HeLa cells, using SocS3 antibody Catalog No:115489 at 1:25 dilution and Rhodamine-labeled goat anti-rabbit



IgG (red).

IP Result of anti-SocS3 (IP:Catalog No:115489, 4ug; Detection:Catalog No:115489 1:500) with K-562 cells lysate 1720ug.