

# Human CRELD2/UNQ185/PRO211 (His tag) recombinant protein



Catalog Number: 519089

## General Information

### Gene Name Synonym

Cysteine-Rich With EGF-Like Domain Protein 2,  
CRELD2

### Protein Construction

A DNA sequence encoding the Human  
CRELD2/UNQ185/PRO211 Ala25-Leu321 is  
expressed with a 6His tag at the C-terminus.

### Organism

Human

### Expression Host

Human Cells

## QC Testing

### Purity

>95% as determined by SDS-PAGE.

### Endotoxin

<1.0 EU per  $\mu\text{g}$  protein as determined by the LAL  
method.

### Stability

Store for up to 12 months at  $-20^{\circ}\text{C}$  to  $-80^{\circ}\text{C}$  as  
lyophilized powder. Aliquots of reconstituted  
samples are stable at  $< -20^{\circ}\text{C}$  for 3 months.

### Formulation

Lyophilized from a  $0.2\ \mu\text{m}$  filtered solution of  
PBS, 5% Trehalose, pH 7.4.

## Usage Guide

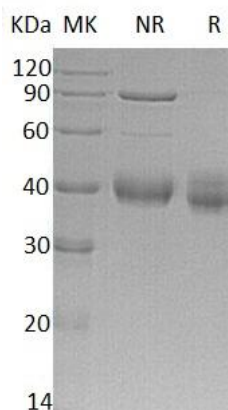
### Storage

Lyophilized protein should be stored at  $< -20^{\circ}\text{C}$ ,  
though stable at room temperature for 3 weeks.  
Reconstituted protein solution can be stored at  
 $4-7^{\circ}\text{C}$  for 2-7 days.

### Reconstitution

Always centrifuge tubes before opening. Do not  
mix by vortex or pipetting. It is not recommended  
to reconstitute to a concentration less than  
 $100\ \mu\text{g}/\text{ml}$ . Dissolve the lyophilized protein in  
ddH<sub>2</sub>O. Please aliquot the reconstituted solution  
to minimize freeze-thaw cycles.

## SDS-PAGE



Human CRELD2/UNQ185/PRO211 (His tag)  
recombinant protein