

# Annexin A1 antibody



Catalog Number: 108089

## Product name

Annexin A1 antibody

## Specificity

Human; other species not tested.

## Antibody description

Annexin A1 Rabbit Polyclonal antibody. Positive WB detected in K-562 cells, HeLa cells, HepG2 cells. Positive IHC detected in human oesophagus tissue, human colon tissue. Positive FC detected in HeLa cells. Observed molecular weight by Western-blot: 39 kDa

## Preparation

This antibody was obtained by immunization of Peptide (Accession Number: NM\_000700). Purification method: Antigen affinity purified.

## Formulation

PBS with 0.02% sodium azide and 50% glycerol pH 7.3.

## Storage

Store at -20°C. DO NOT ALIQUOT

## Clonality

Polyclonal

## Ig Type

Rabbit IgG

## Applications

ELISA, WB, IHC, FC

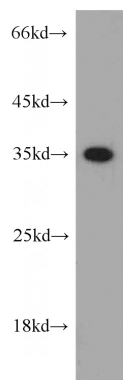
## Dilutions

Recommended Dilution:

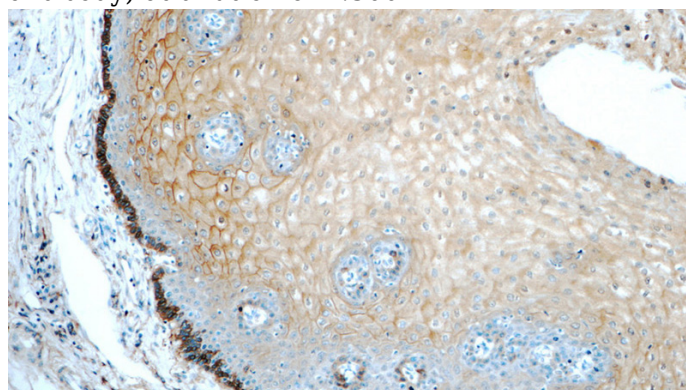
WB: 1:200-1:1000

IHC: 1:20-1:200

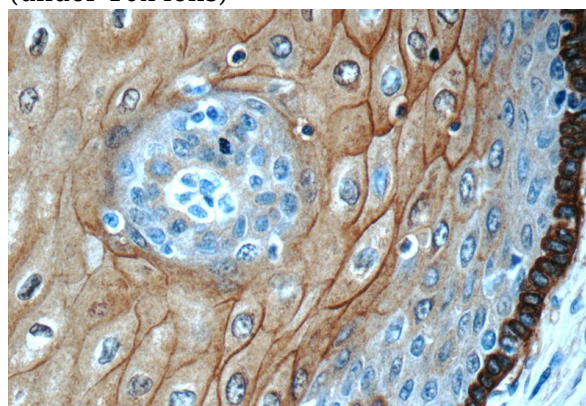
## Validations



K-562 cells were subjected to SDS PAGE followed by western blot with Catalog No:108089(ANXA1 antibody) at dilution of 1:300



Immunohistochemistry of paraffin-embedded human oesophagus tissue slide using Catalog No:108089(ANXA1 Antibody) at dilution of 1:50 (under 10x lens)



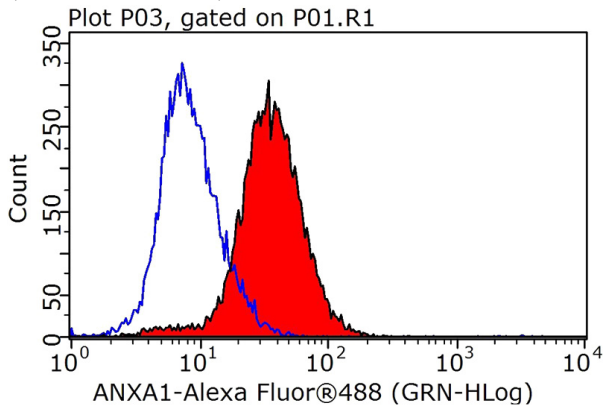
Immunohistochemistry of paraffin-embedded human oesophagus tissue slide using Catalog No:108089(ANXA1 Antibody) at dilution of 1:50

# Annexin A1 antibody



Catalog Number: 108089

(under 40x lens)



1X10<sup>6</sup> HeLa cells were stained with 0.2ug ANXA1 antibody (Catalog No:108089, red) and control antibody (blue). Fixed with 90% MeOH blocked with 3% BSA (30 min). Alexa Fluor 488-conjugated AffiniPure Goat Anti-Rabbit IgG(H+L) with dilution 1:1000.