

BLOC1S1 Polyclonal Antibody



Catalog Number: 165089

Product name

BLOC1S1 Polyclonal Antibody

Specificity

Mouse

Antibody description

Polyclonal antibody to BLOC1S1

Preparation

Antigen: Recombinant fusion protein containing a sequence corresponding to amino acids 29-153 of human BLOC1S1 (NP_001478.2).

Formulation

PBS with 0.02% sodium azide, 50% glycerol, pH7.3.

Storage

Store at -20°C. Avoid freeze / thaw cycles.

Clonality

Polyclonal

Ig Type

Rabbit IgG

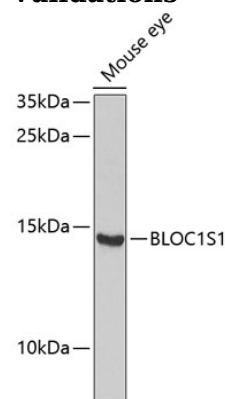
Applications

WB

Dilutions

WB 1:500 - 1:2000

Validations



Western blot - BLOC1S1 Polyclonal Antibody

Western blot analysis of extracts of mouse eye, using BLOC1S1 Antibody at 1:1000 dilution. Secondary antibody: HRP Goat Anti-Rabbit IgG (H+L) at 1:10000 dilution. Lysates/proteins: 25ug per lane. Blocking buffer: 3% nonfat dry milk in TBST. Detection: ECL Enhanced Kit. Exposure time: 30s.