

AQP2 Polyclonal Antibody

Catalog Number: 163089

Product name

AQP2 Polyclonal Antibody

Specificity

Human, Mouse, Rat

Antibody description

Polyclonal antibody to AQP2

Preparation

Antigen: Recombinant fusion protein containing a sequence corresponding to amino acids 147-271 of human AQP2 (NP_000477.1).

Formulation

PBS with 0.02% sodium azide, 50% glycerol, pH7.3.

Storage

Store at -20°C. Avoid freeze / thaw cycles.

Clonality

Polyclonal

Ig Type

Rabbit IgG

Applications

WB, IHC, IF

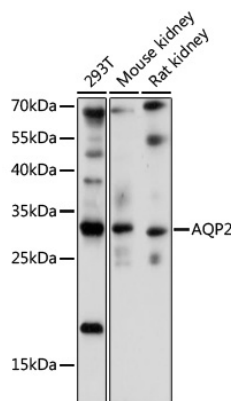
Dilutions

WB 1:500 - 1:2000

IHC 1:50 - 1:100

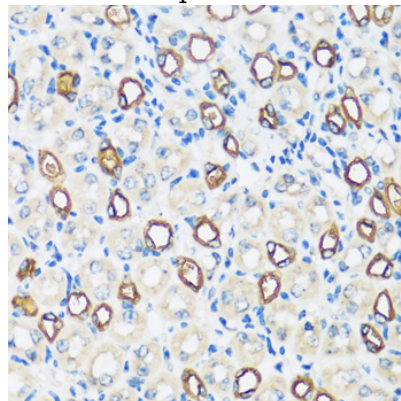
IF 1:50 - 1:200

Validations



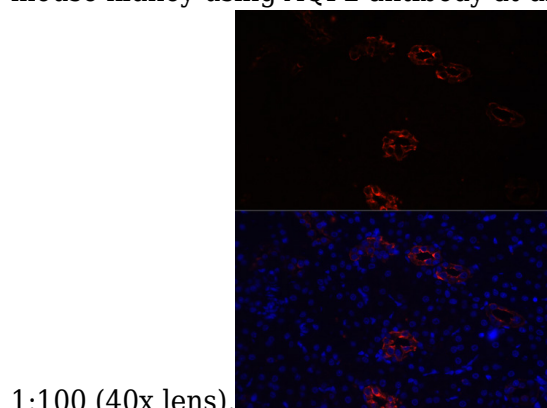
Western blot - AQP2 Polyclonal Antibody

Western blot analysis of extracts of various cell lines, using AQP2 antibody at 1:1000 dilution. Secondary antibody: HRP Goat Anti-Rabbit IgG (H+L) at 1:10000 dilution. Lysates/proteins: 25ug per lane. Blocking buffer: 3% nonfat dry milk in TBST. Detection: ECL Basic Kit. Exposure time: 10s.



Immunohistochemistry - AQP2 Polyclonal Antibody

Immunohistochemistry of paraffin-embedded mouse kidney using AQP2 antibody at dilution of



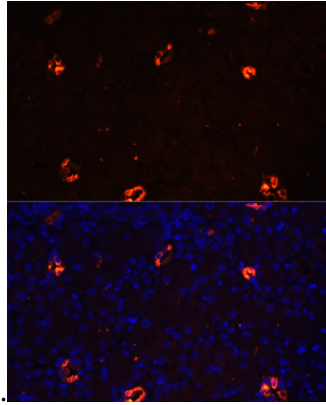
1:100 (40x lens).

AQP2 Polyclonal Antibody

Catalog Number: 163089

Immunofluorescence - AQP2 Polyclonal Antibody

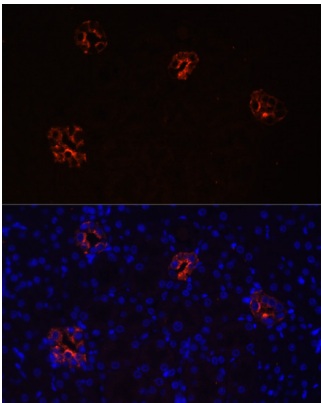
Immunofluorescence analysis of rat kidney cells using AQP2 antibody at dilution of 1:100. Blue:



DAPI for nuclear staining.

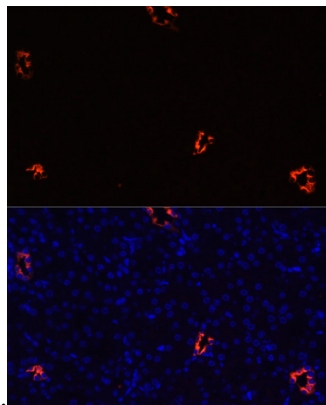
Immunofluorescence - AQP2 Polyclonal Antibody

Immunofluorescence analysis of mouse kidney cells using AQP2 antibody at dilution of 1:100. Blue: DAPI for nuclear staining.



Immunofluorescence - AQP2 Polyclonal Antibody

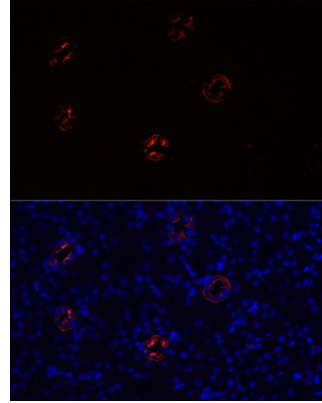
Immunofluorescence analysis of rat kidney cells using AQP2 antibody at dilution of 1:100. Blue:



DAPI for nuclear staining.

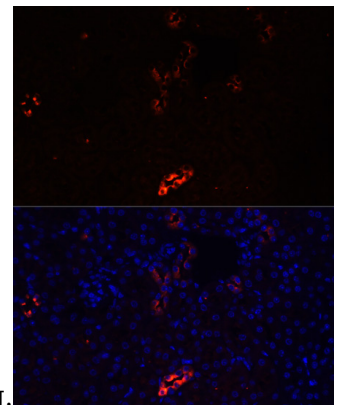
Immunofluorescence - AQP2 Polyclonal Antibody

Immunofluorescence analysis of mouse kidney cells using AQP2 antibody at dilution of 1:100. Blue: DAPI for nuclear staining.



Immunofluorescence - AQP2 Polyclonal Antibody

Immunofluorescence analysis of rat kidney cells using AQP2 antibody at dilution of 1:100. Blue:



DAPI for nuclear staining.

Immunofluorescence - AQP2 Polyclonal Antibody

Immunofluorescence analysis of mouse kidney cells using AQP2 antibody at dilution of 1:100. Blue: DAPI for nuclear staining.