

KLHL12 antibody

Catalog Number: 112089

Product name

KLHL12 antibody

IHC: 1:20-1:200

IF: 1:20-1:200

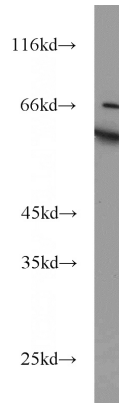
Specificity

Human, Mouse, Rat; other species not tested.

Validations

Antibody description

KLHL12 Rabbit Polyclonal antibody. Positive IF detected in PC-3 cells. Positive IHC detected in human testis tissue. Positive WB detected in PC-3 cells. Observed molecular weight by Western-blot: 53-56 kDa, 63-67 kDa



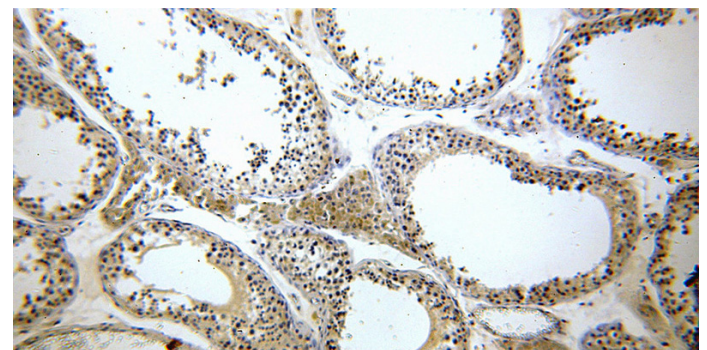
Preparation

This antibody was obtained by immunization of KLHL12 recombinant protein (Accession Number: NM_021633). Purification method: Antigen affinity purified.

PC-3 cells were subjected to SDS PAGE followed by western blot with Catalog No:112089(KLHL12 antibody) at dilution of 1:1000

Formulation

PBS with 0.02% sodium azide and 50% glycerol pH 7.3.



Storage

Store at -20°C. DO NOT ALIQUOT

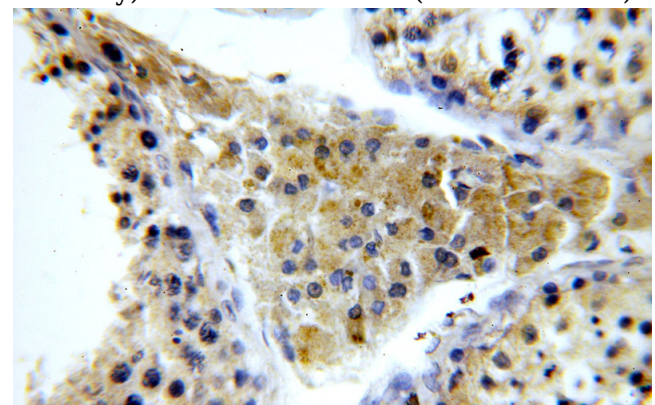
Clonality

Polyclonal

Immunohistochemical of paraffin-embedded human testis using Catalog No:112089(KLHL12 antibody) at dilution of 1:100 (under 10x lens)

Ig Type

Rabbit IgG



Applications

ELISA, WB, IHC, IF

Dilutions

Recommended Dilution:

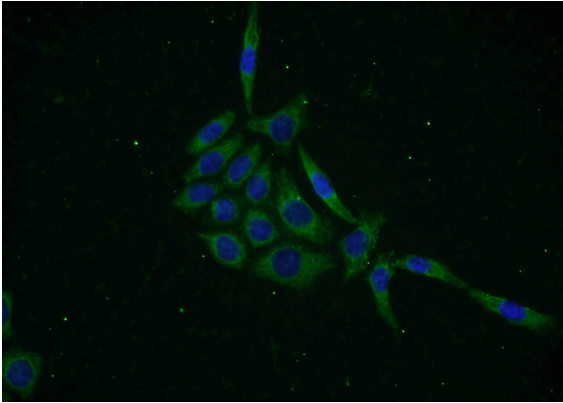
WB: 1:500-1:5000

Immunohistochemical of paraffin-embedded human testis using Catalog No:112089(KLHL12

KLHL12 antibody

Catalog Number: 112089

antibody) at dilution of 1:100 (under 40x lens)



Immunofluorescent analysis of PC-3 cells using Catalog No:112089(KLHL12 Antibody) at dilution of 1:50 and Alexa Fluor 488-conjugated AffiniPure Goat Anti-Rabbit IgG(H+L)