

C6orf15 antibody

Catalog Number: 108779

Product name

C6orf15 antibody

IHC: 1:20-1:200

IF: 1:20-1:200

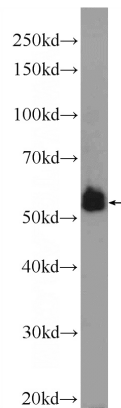
Specificity

Human, Monkey; other species not tested.

Validations

Antibody description

C6orf15 Rabbit Polyclonal antibody. Positive WB detected in PC-3 cells, COS-7 cells. Positive IHC detected in human skin tissue, human tonsillitis tissue. Positive IF detected in PC-3 cells. Observed molecular weight by Western-blot: 50-55 kDa



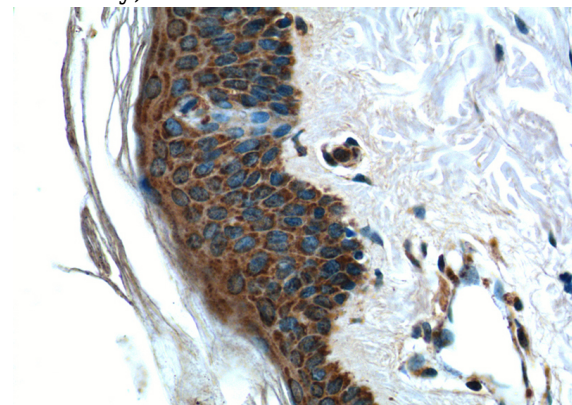
Preparation

This antibody was obtained by immunization of C6orf15 recombinant protein (Accession Number: NM_014070). Purification method: Antigen affinity purified.

PC-3 cells were subjected to SDS PAGE followed by western blot with Catalog No:108779(C6orf15 Antibody) at dilution of 1:600

Formulation

PBS with 0.1% sodium azide and 50% glycerol pH 7.3.



Storage

Store at -20°C. DO NOT ALIQUOT

Clonality

Polyclonal

Immunohistochemistry of paraffin-embedded human skin tissue slide using Catalog No:108779(C6orf15 Antibody) at dilution of 1:50 (under 40x lens)

Ig Type

Rabbit IgG

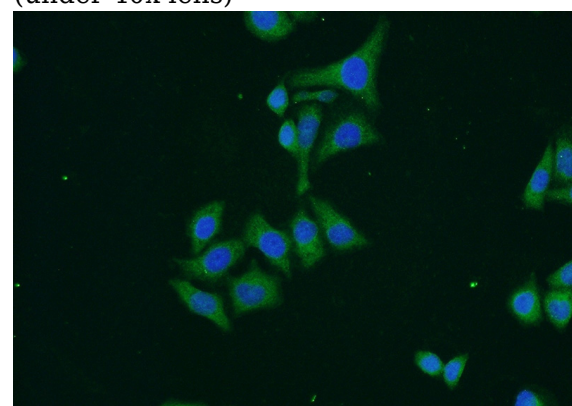
Applications

ELISA, WB, IHC, IF

Dilutions

Recommended Dilution:

WB: 1:200-1:2000



Immunofluorescent analysis of PC-3 cells using

C6orf15 antibody



Catalog Number: 108779

Catalog No:108779(C6orf15 Antibody) at dilution of 1:50 and Alexa Fluor 488-conjugated AffiniPure Goat Anti-Rabbit IgG(H+L)