

Anti-Caldesmon/CDM Rabbit antibody



Catalog Number: 167779

Product name

Anti-Caldesmon/CDM Rabbit antibody

Ig Type

Rabbit IgG

Specificity

Human

Applications

WB, IHC-P

Antibody description

Caldesmon/CDM Rabbit monoclonal antibody

Dilutions

WB: 1/1000

IHC: 1/20

Preparation

Antigen: A synthetic peptide of human Caldesmon/CDM

Validations

Formulation

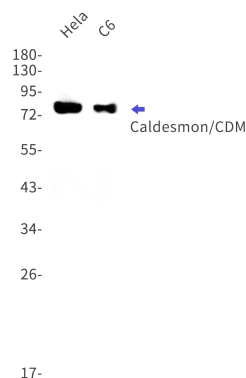
50nM Tris-Glycine(pH 7.4), 0.15M NaCl, 40%Glycerol, 0.01% sodium azide and 0.05% BSA

Storage

Store at 4°C short term. Store at -20°C long term. Avoid freeze / thaw cycle.

Clonality

Monoclonal



Western blot detection of Caldesmon/CDM in HeLa,C6 cell lysates using Caldesmon/CDM Rabbit mAb(1:1000 diluted).Predicted band size:93kDa.Observed band size:80kDa.