

# Anti-CaMKII (pan) Rabbit antibody

Catalog Number: 166779

## Product name

Anti-CaMKII (pan) Rabbit antibody

## Specificity

Human, Mouse, Rat

## Antibody description

CaMKII (pan) Rabbit polyclonal antibody

## Preparation

Antigen: A synthesized peptide derived from human CaMKII

## Formulation

Rabbit IgG in phosphate buffered saline , pH 7.4, 150mM NaCl, 0.02% sodium azide and 50% glycerol.

## Storage

Store at 4°C short term. Store at -20°C long term. Avoid freeze / thaw cycle.

## Clonality

Polyclonal

## Ig Type

Rabbit IgG

## Applications

WB, IHC-P, ICC/IF

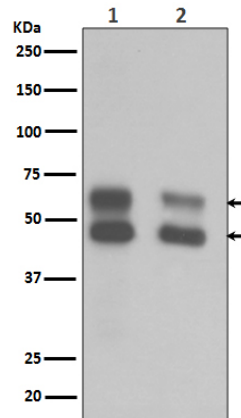
## Dilutions

WB: 1/500-1/2000

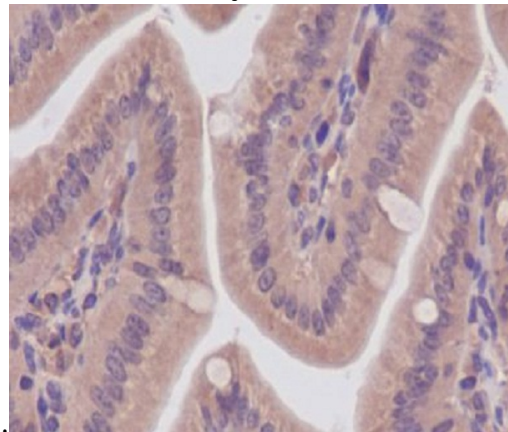
IHC: 1/50-1/200

ICC/IF: 1/50-1/200

## Validations

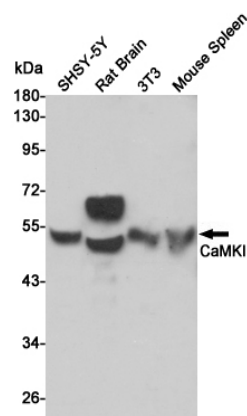


Western blot analysis of CaMKII expression in (1) Mouse brain tissue lysate ;(2) Rat brain tissue



lysate.

Immunohistochemical analysis of paraffin-embedded mouse colon, using CaMKII Antibody.



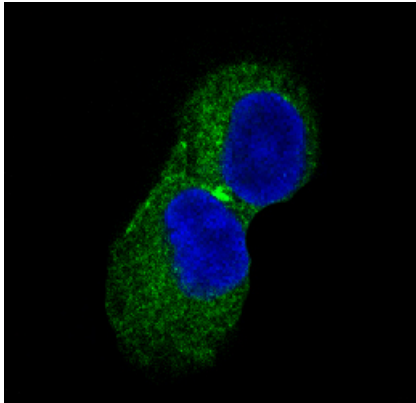
Western blot analysis of CaMKII expression in SHSY-5Y,Rat Brain,3T3 and Mouse Spleen cell lysates using CaMKII antibody at 1/1000 dilution.Predicted band size:45,60KDa.Observed band size:45,60KDa.

# Anti-CaMKII (pan) Rabbit antibody



Catalog Number: 166779

---



Immunofluorescent analysis of PC-12 cells, using CaMKII Antibody .