

MTHFS antibody

Catalog Number: 112779

Product name

MTHFS antibody

Specificity

human, mouse, rat; other species not tested.

Antibody description

MTHFS Rabbit Polyclonal antibody. Positive IHC detected in human liver cancer. Positive WB detected in human liver tissue, HeLa cells, human stomach tissue, Jurkat cells, U-937 cells. Observed molecular weight by Western-blot: 23kd

Preparation

This antibody was obtained by immunization of MTHFS recombinant protein (Accession Number: NM_006441). Purification method: Antigen affinity purified.

Formulation

PBS with 0.1% sodium azide and 50% glycerol pH 7.3.

Storage

Store at -20°C. DO NOT ALIQUOT

Clonality

Polyclonal

Ig Type

Rabbit IgG

Applications

ELISA, WB, IHC

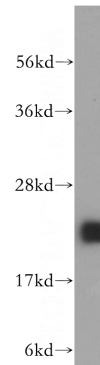
Dilutions

Recommended Dilution:

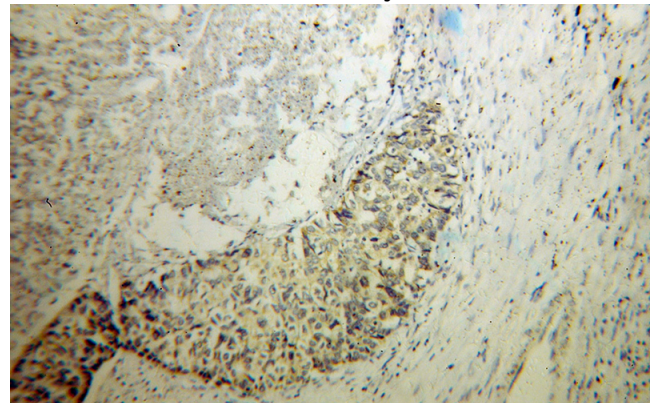
WB: 1:1000-1:10000

IHC: 1:20-1:200

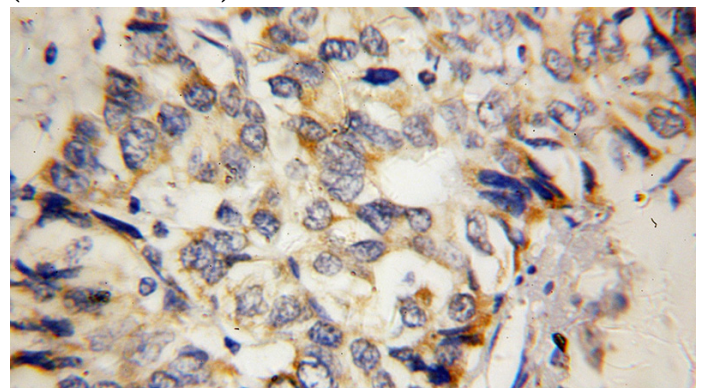
Validations



human liver tissue were subjected to SDS PAGE followed by western blot with Catalog No:112779(MTHFS antibody) at dilution of 1:500



Immunohistochemical of paraffin-embedded human liver cancer using Catalog No:112779(MTHFS antibody) at dilution of 1:100 (under 10x lens)



Immunohistochemical of paraffin-embedded human liver cancer using Catalog No:112779(MTHFS antibody) at dilution of 1:100

MTHFS antibody



Catalog Number: 112779

(under 40x lens)