

# Anti-PGDH/PHGDH antibody



Catalog Number: 106379

## Product name

Anti-PGDH/PHGDH antibody

## Immunogen

[Human PGDH/PHGDH \(His Tag\) recombinant protein](#)

## Specificity

Human PGDH / PHGDH

## Antibody description

Mouse monoclonal to PGDH/PHGDH

## Preparation

This antibody was produced from a hybridoma resulting from the fusion of a mouse myeloma with B cells obtained from a mouse immunized with purified, recombinant Human PGDH / PHGDH (rh PGDH / PHGDH; O43175; Met1-Phe533). The IgG fraction of the cell culture supernatant was purified by Protein A affinity chromatography.

## Formulation

0.2  $\mu$ m filtered solution in PBS with 5% trehalose

## Storage

This antibody can be stored at 2°C-8°C for one month without detectable loss of activity. Antibody products are stable for twelve months from date of receipt when stored at -20°C to -80°C. Preservative-Free.

Sodium azide is recommended to avoid contamination (final concentration 0.05%-0.1%). It is toxic to cells and should be disposed of properly. Avoid repeated freeze-thaw cycles.

## Clonality

Monoclonal

## Ig Type

Mouse IgG2b

## Applications

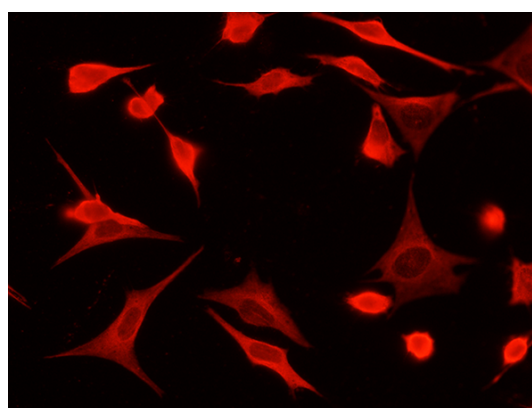
FCM, IF, ICC/IF

## Dilutions

FCM: 0.5-2  $\mu$ g/Test

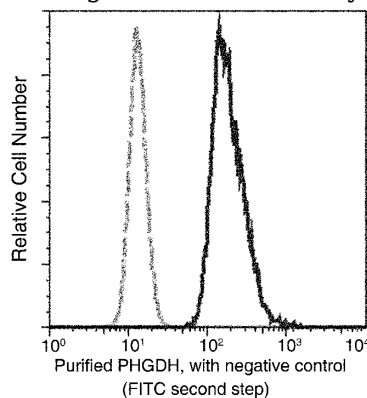
ICC/IF: 10-25  $\mu$ g/mL

## Validations



PGDH / PHGDH Antibody, Mouse MAb, Immunofluorescence

Immunofluorescence staining of Human PHGDH in Hela cells. Cells were fixed with 4% PFA, permeabilized with 1% Triton X-100 in PBS, blocked with 10% serum, and incubated with Mouse anti-Human PHGDH monoclonal antibody (15  $\mu$ g/ml) at 37°C 1 hour. Then cells were stained with the Alexa Fluor® 594-conjugated Goat Anti-mouse IgG secondary antibody (red). Positive staining was localized to cytoplasm.



# Anti-PGDH/PHGDH antibody



Catalog Number: 106379

---

PGDH / PHGDH Antibody, Mouse MAb

Flow cytometric analysis of Human PHGDH expression on HeLa cells. The cells were treated according to manufacturer's manual (BD Pharmingen™ Cat. No. 554714), stained with

purified anti-Human PHGDH, then a FITC-conjugated second step antibody. The fluorescence histograms were derived from gated events with the forward and side light-scatter characteristics of intact cells.