

Anti-Tetranectin/CLEC3B antibody



Catalog Number: 103379

Product name

Anti-Tetranectin/CLEC3B antibody

Immunogen

[Human Tetranectin/CLEC3B \(His Tag\) recombinant protein](#)

Specificity

Human Tetranectin / CLEC3B

Antibody description

Rabbit polyclonal to Tetranectin/CLEC3B

Preparation

Produced in rabbits immunized with purified, recombinant Human Tetranectin / CLEC3B (rh Tetranectin / CLEC3B; AAX37102.1; Met 1-Val 202). Tetranectin / CLEC3B specific IgG was purified by Human Tetranectin / CLEC3B affinity chromatography.

Formulation

0.2 µm filtered solution in PBS with 5% trehalose

Storage

This antibody can be stored at 2°C-8°C for one month without detectable loss of activity. Antibody products are stable for twelve months from date of receipt when stored at -20°C to -80°C.

Preservative-Free.

Sodium azide is recommended to avoid contamination (final concentration 0.05%-0.1%). It is toxic to cells and should be disposed of properly. Avoid repeated freeze-thaw cycles.

Clonality

Polyclonal

Ig Type

Rabbit IgG

Applications

ELISA, IHC-P

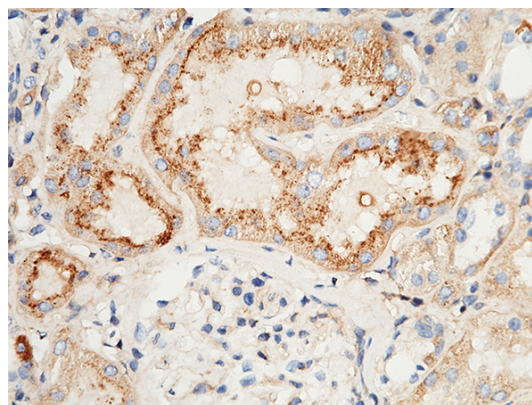
Dilutions

ELISA: 0.1-0.2 µg/mL

This antibody can be used at 0.1-0.2 µg/mL with the appropriate secondary reagents to detect Human CLEC3B. The detection limit for Human CLEC3B is approximately 0.00245 ng/well.

IHC-P: 0.1-2 µg/mL

Validations



CLEC3B / Tetranectin Antibody, Rabbit PAb, Antigen Affinity Purified, Immunohistochemistry

Immunochemical staining of human CLEC3B in human kidney with rabbit polyclonal antibody (1 µg/mL, formalin-fixed paraffin embedded sections).