

# Anti-PEBP1 antibody



Catalog Number: 142379

## Product name

Anti-PEBP1 antibody

## Immunogen

[Human PEBP1/RKIP recombinant protein](#)

## Specificity

Human PEBP1 / RKIP

## Antibody description

Rabbit Monoclonal to Human PEBP1

## Preparation

This antibody was obtained from a rabbit immunized with purified, recombinant Human PEBP1 / RKIP .

## Formulation

0.2 µm filtered solution in PBS

## Storage

This antibody can be stored at 2°C-8°C for one month without detectable loss of activity. Antibody products are stable for twelve months from date of receipt when stored at -20°C to -80°C.

Preservative-Free.

Sodium azide is recommended to avoid contamination (final concentration 0.05%-0.1%). It is toxic to cells and should be disposed of properly. Avoid repeated freeze-thaw cycles.

## Clonality

Monoclonal

## Ig Type

Rabbit IgG

## Applications

WB, ELISA

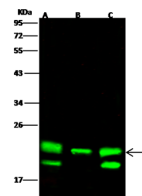
## Dilutions

WB: 5-20 µg/ml

ELISA: 0.1-0.2 µg/ml

This antibody can be used at 0.1-0.2 µg/ml with the appropriate secondary reagents to detect Human PEBP1 / RKIP.

## Validations



Items	Lanes	A	B	C
Sample (whole cell lysate)		HeLa	A549	HepG2
Sample Volume (µg/lane)		30	30	30
Gel	13% SDS-PAGE reducing gel			
Recommended Concentration		5-20 µg/ml		
Secondary Antibody	Dylight 800-labeled Antibody To Rabbit IgG (H+L), at 1:5000 dilution.			
Developed using Odyssey imaging system.				
Explanation	Predicted band size : 21 kDa Observed band size : 21 kDa Additional bands at : 19 kDa (We are unsure as to the identity of these extra bands.)			

PEBP1 / RKIP Antibody, Rabbit MAb, Western blot