

Anti-Phospho-PAK4/PAK5/PAK6 (Ser474/Ser560/Ser602) Rabbit antibody



Catalog Number: 167679

Product name

Monoclonal

Anti-Phospho-PAK4/PAK5/PAK6
(Ser474/Ser560/Ser602) Rabbit antibody

Ig Type

Rabbit IgG

Specificity

Human, Mouse, Rat

Applications

WB, FC

Antibody description

Phospho-PAK4/PAK5/PAK6
(Ser474/Ser560/Ser602) Rabbit monoclonal
antibody

Dilutions

WB: 1/500-1/2000

FC: 1/200

Validations

Preparation

Antigen: A synthesized peptide derived from
human Phospho-PAK4 + PAK5 + PAK6 (S474 +
S560 + S602)

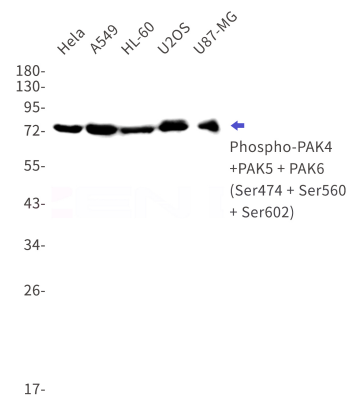
Formulation

Rabbit IgG in phosphate buffered saline , pH 7.4,
150mM NaCl, 0.02% sodium azide and 50%
glycerol.

Storage

Store at 4°C short term. Store at -20°C long term.
Avoid freeze / thaw cycle.

Clonality



Western blot detection of Phospho-PAK4 + PAK5 + PAK6 (Ser474 + Ser560 + Ser602) in HeLa, A549, HL-60, U2OS, U87-MG cell lysates using Phospho-PAK4 + PAK5 + PAK6 (Ser474 + Ser560 + Ser602) Rabbit mAb (1:1000 diluted). Observed band size: 64, 80, 75 kDa.