

# Anti-RUNX1/2/3 Rabbit antibody



Catalog Number: 166679

## Product name

Anti-RUNX1/2/3 Rabbit antibody

## Specificity

Human, Mouse, Rat

## Antibody description

RUNX1/2/3 Rabbit polyclonal antibody

## Preparation

Antigen: A synthesized peptide derived from human RUNX1/RUNX2/RUNX3

## Formulation

Rabbit IgG in phosphate buffered saline , pH 7.4, 150mM NaCl, 0.02% sodium azide and 50% glycerol.

## Storage

Store at 4°C short term. Store at -20°C long term. Avoid freeze / thaw cycle.

## Clonality

Polyclonal

## Ig Type

Rabbit IgG

## Applications

WB, IHC-P, ICC/IF, IP, FC

## Dilutions

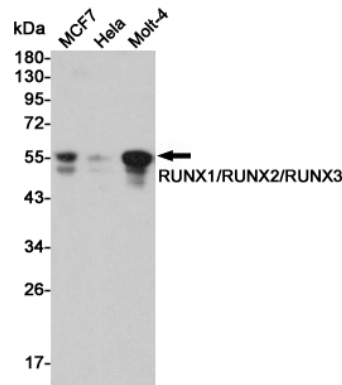
WB: 1/500-1/2000

IHC: 1/50-1/200

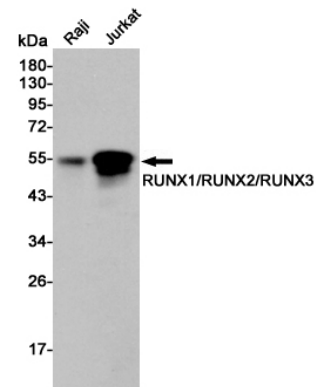
ICC/IF: 1/50-1/200

IP: 1/50

## Validations

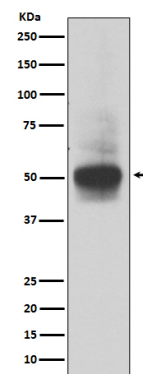


Western blot analysis of RUNX1/RUNX2/RUNX3 expression in MCF7, HeLa and Molt-4 cell lysates using RUNX1/RUNX2/RUNX3 antibody at 1/5000 dilution. Predicted band size: 51 kDa. Observed



band size: 51 kDa.

Western blot analysis of RUNX1/RUNX2/RUNX3 expression in Raji and Jurkat cell lysates using RUNX1/RUNX2/RUNX3 antibody at 1/5000 dilution. Predicted band size: 51 kDa. Observed



band size: 51 kDa.

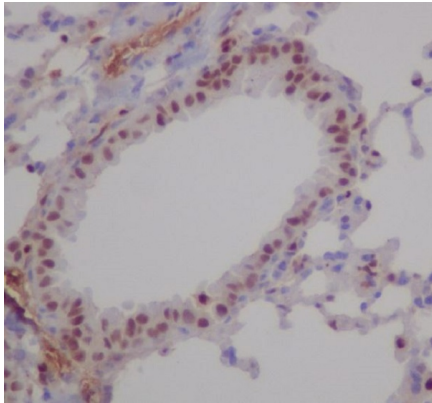
Western blot analysis of RUNX1/RUNX2/RUNX3 expression in MOLT4 cell lysate.

# Anti-RUNX1/2/3 Rabbit antibody



Catalog Number: 166679

---



Immunohistochemical analysis of paraffin-embedded mouse lung, using RUNX1/RUNX2/RUNX3 Antibody.