

Anti-USH1C/Harmonin antibody



Catalog Number: 103679

Product name

Anti-USH1C/Harmonin antibody

Immunogen

[Human USH1C/Harmonin \(His Tag\) recombinant protein](#)

Specificity

Human USH1C / Harmonin

Antibody description

Rabbit polyclonal to USH1C/Harmonin

Preparation

Produced in rabbits immunized with purified, recombinant Human USH1C / Harmonin (rh USH1C / Harmonin; Q9Y6N9-1; Met 1-Phe 552). USH1C / Harmonin specific IgG was purified by Human USH1C / Harmonin affinity chromatography.

Formulation

0.2 µm filtered solution in PBS with 5% trehalose

Storage

This antibody can be stored at 2°C-8°C for one month without detectable loss of activity. Antibody products are stable for twelve months from date of receipt when stored at -20°C to -80°C.

Preservative-Free.

Sodium azide is recommended to avoid contamination (final concentration 0.05%-0.1%). It is toxic to cells and should be disposed of properly. Avoid repeated freeze-thaw cycles.

Clonality

Polyclonal

Ig Type

Rabbit IgG

Applications

ELISA, WB, IHC-P, IP

Dilutions

WB: 2-10 µg/mL

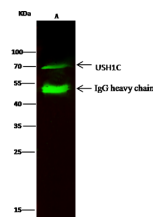
ELISA: 0.1-0.2 µg/mL

This antibody can be used at 0.1-0.2 µg/mL with the appropriate secondary reagents to detect Human USH1C. The detection limit for Human USH1C is approximately 0.00975 ng/well.

IHC-P: 0.1-2 µg/mL

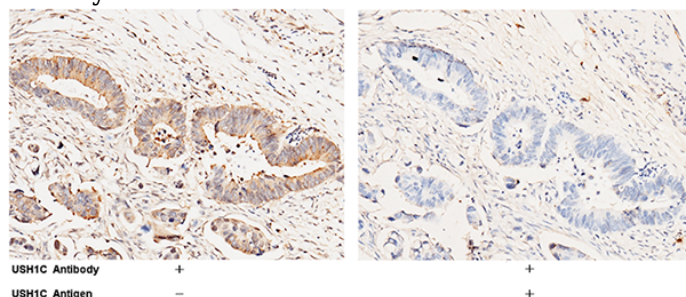
IP: 2-4 µg/mg of lysate

Validations



Items	Lanes	A
Sample (whole cell lysate)		Caco-2
Sample quantity		0.5 mg
IP antibody quantity		2 µg
Protein G agarose		15 µl of 50% Protein G Agarose
Cel		13% SDS-PAGE reducing gel
Primary antibody		USH1C antibody at 2 µg/ml [Cat# 10613-RP02]
Secondary antibody		Dylight 800-labeled antibody to rabbit IgG (H+L), at 1:5000 dilution.

USH1C / Harmonin Antibody, Rabbit PAb, Antigen Affinity Purified



USH1C / Harmonin Antibody, Rabbit PAb, Antigen Affinity Purified, Immunohistochemistry

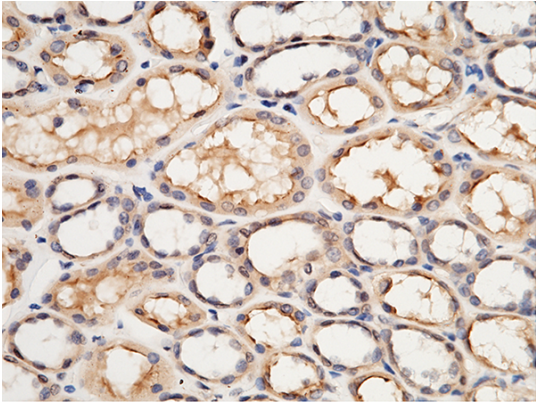
Immunochemical staining of human USH1C in human colon-carcinoma with rabbit polyclonal antibody (1 µg/mL, formalin-fixed paraffin

Anti-USH1C/Harmonin antibody



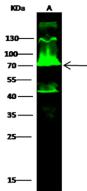
Catalog Number: 103679

embedded sections). Positive staining was localized to epithelium. The left panel: tissue incubated with primary antibody; The right panel: tissue incubated with the mixture of primary antibody and antigen (recombinant protein).



USH1C / Harmonin Antibody, Rabbit PAb, Antigen Affinity Purified, Immunohistochemistry

Immunochemical staining of human USH1C in human kidney with rabbit polyclonal antibody (1 µg/mL, formalin-fixed paraffin embedded



Items	Lanes
Sample (whole cell lysate)	Caco-2
Sample Volume (µg/lane)	60
Gel	13% SDS-PAGE reducing gel
Recommended Concentration	2-10 µg/ml
Secondary Antibody	Dylight 800 labeled Antibody To Rabbit IgG (H+L), at 1:5000 dilution.

sections).

USH1C / Harmonin Antibody, Rabbit PAb, Antigen Affinity Purified, Western blot