

Anti-GFRA1 antibody



Catalog Number: 102679

Product name

Anti-GFRA1 antibody

Immunogen

[Mouse GFRA1 \(His Tag\) recombinant protein](#)

Specificity

Mouse GFRA1 / GFR alpha-1

Antibody description

Rabbit polyclonal to GFRA1

Preparation

Produced in rabbits immunized with purified, recombinant Mouse GFRA1 / GFR alpha-1 (rM GFRA1; AAB86600.1; Met 1-Ser 425). GFRA1 specific IgG was purified by mouse GFRA1 affinity chromatography

Formulation

0.2 µm filtered solution in PBS with 5% trehalose

Storage

This antibody can be stored at 2°C-8°C for one month without detectable loss of activity. Antibody products are stable for twelve months from date of receipt when stored at -20°C to -80°C.

Preservative-Free.

Sodium azide is recommended to avoid contamination (final concentration 0.05%-0.1%). It is toxic to cells and should be disposed of properly. Avoid repeated freeze-thaw cycles.

Clonality

Polyclonal

Ig Type

Rabbit IgG

Applications

ELISA, WB

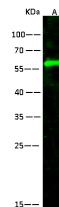
Dilutions

WB: 2-10 µg/mL

ELISA: 0.1-0.2 µg/mL

This antibody can be used at 0.1-0.2 µg/mL with the appropriate secondary reagents to detect Mouse GFRA1. The detection limit for Mouse GFRA1 is approximately 0.039 ng/well.

Validations



Items	Lanes
Sample (whole cell lysate)	A 293T
Sample Volume (µg/lane)	30
Gel	13% SDS-PAGE reducing gel
Recommended Concentration	2-10µg/ml
Secondary Antibody	Dylight 800-labeled Antibody to Rabbit IgG (H+L), at 1:5000 dilution.
Developed using Odyssey imaging system.	
Explanation	Predicted band size : 50 kDa Observed band size : 56 kDa

GFRA1 / GFR alpha-1 Antibody, Rabbit PAb, Antigen Affinity Purified, Western blot