

TMS1 antibody

Catalog Number: 116279

Product name

TMS1 antibody

Immunogen

[Human TMS1 Recombinant protein \(GST tag\)](#)

Specificity

Human, Mouse; other species not tested.

Antibody description

TMS1 Rabbit Polyclonal antibody. Positive WB detected in HL-60 cells, A549 cells, Raji cells, U-937 cells. Positive IP detected in HL-60 cells. Positive IHC detected in human lung cancer tissue. Observed molecular weight by Western-blot: 22-25 kDa

Preparation

This antibody was obtained by immunization of TMS1 recombinant protein (Accession Number: NM_145183). Purification method: Antigen affinity purified.

Formulation

PBS with 0.1% sodium azide and 50% glycerol pH 7.3.

Storage

Store at -20°C. DO NOT ALIQUOT

Clonality

Polyclonal

Ig Type

Rabbit IgG

Applications

ELISA, WB, IHC, IP

Dilutions

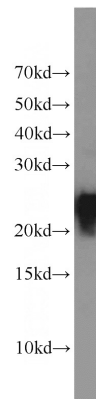
Recommended Dilution:

WB: 1:500-1:5000

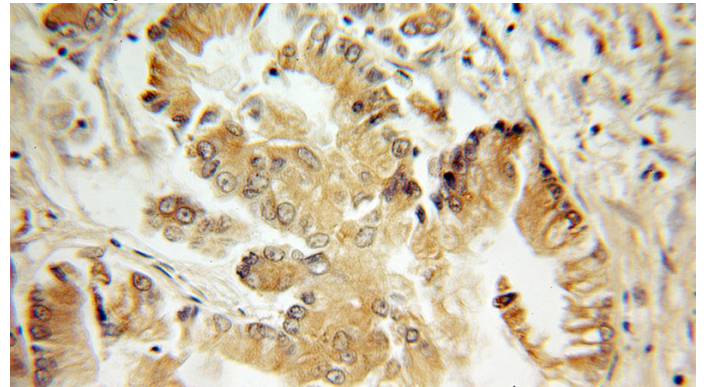
IP: 1:1000-1:10000

IHC: 1:20-1:200

Validations



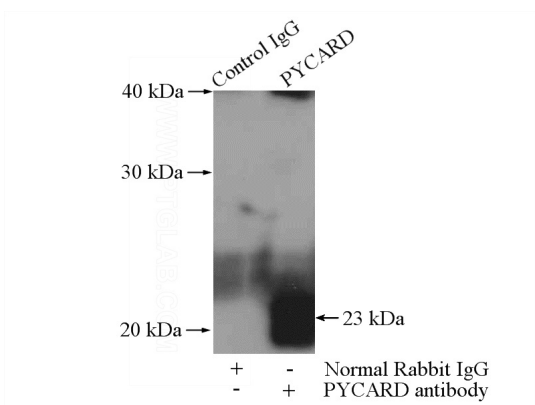
HL-60 cells were subjected to SDS PAGE followed by western blot with Catalog No:116279(TMS1 antibody) at dilution of 1:1000



Immunohistochemical of paraffin-embedded human lung cancer using Catalog No:116279(TMS1 antibody) at dilution of 1:100 (under 10x lens)

TMS1 antibody

Catalog Number: 116279



IP Result of anti-TMS1 (IP:Catalog No:116279, 4ug; Detection:Catalog No:116279 1:2000) with HL-60 cells lysate 4000ug.