

# SHP1 antibody

Catalog Number: 115279

## Product name

SHP1 antibody

IP: 1:200-1:2000

IF: 1:10-1:100

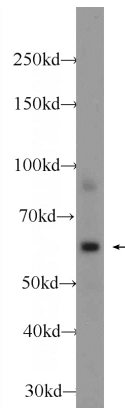
## Specificity

Human; other species not tested.

## Validations

## Antibody description

SHP1 Rabbit Polyclonal antibody. Positive IF detected in MCF-7 cells, A431 cells. Positive WB detected in HeLa cells, A431 cells, Jurkat cells, Raji cells. Positive IP detected in Jurkat cells. Observed molecular weight by Western-blot: 63 kDa



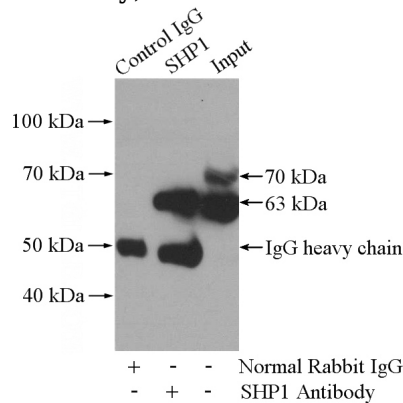
## Preparation

This antibody was obtained by immunization of SHP1 recombinant protein (Accession Number: NM\_080548). Purification method: Antigen affinity purified.

HeLa cells were subjected to SDS PAGE followed by western blot with Catalog No:115279(PTPN6 Antibody) at dilution of 1:1000

## Formulation

PBS with 0.1% sodium azide and 50% glycerol pH 7.3.



## Storage

Store at -20°C. DO NOT ALIQUOT

IP Result of anti-PTPN6 (IP:Catalog No:115279, 4ug; Detection:Catalog No:115279 1:600) with Jurkat cells lysate 3600ug.

## Clonality

Polyclonal

## Ig Type

Rabbit IgG

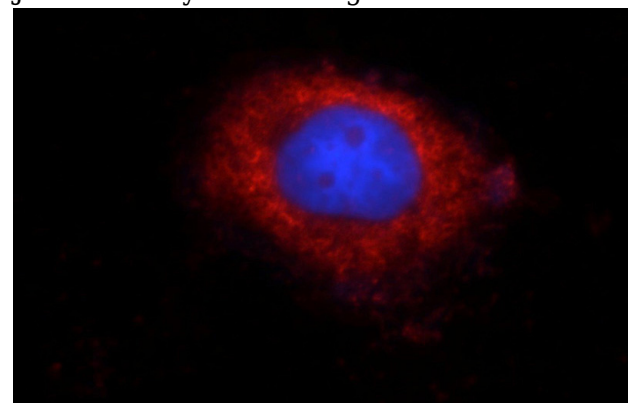
## Applications

ELISA, WB, IF, IP

## Dilutions

Recommended Dilution:

WB: 1:500-1:5000



Immunofluorescent analysis of MCF-7 cells using Catalog No:115279(PTPN6 Antibody) at dilution of

# **SHP1 antibody**



Catalog Number: 115279

---

1:25 and Rhodamine-Goat anti-Rabbit IgG