

Human INSL4 / EPIL (His Tag) recombinant protein



Catalog Number: 500979

General Information

Gene Name Synonym

Insulin-like peptide 4; Placentin; Early placenta insulin-like peptide B chain; Early placenta insulin-like peptide A chain

Protein Construction

A DNA sequence encoding the human INSL4 (Q14641)(Met1-Thr139) was expressed with a C-terminal polyhistidine tag.

Organism

Human

Expression Host

Human Cells

QC Testing

Purity

> 95 % as determined by SDS-PAGE

Endotoxin

< 1.0 EU per μg of the protein as determined by the LAL method

Stability

Samples are stable for up to twelve months from date of receipt at -70°C

Predicted N terminal

Ala 26

Molecular Mass

The recombinant human INSL4 comprises 125 amino acids and has a predicted molecular mass of 14 kDa. The apparent molecular mass of the protein is approximately 12 kDa in SDS-PAGE under reducing conditions.

Formulation

Lyophilized from sterile PBS, pH 7.4.

1. 5 % trehalose and mannitol are added as protectants before lyophilization.

2. Please contact us for any concerns or special requirements.

Usage Guide

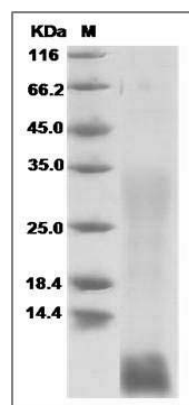
Storage

Store it under sterile conditions at -20°C to -80°C . It is recommended that the protein be aliquoted for optimal storage. Avoid repeated freeze-thaw cycles.

Reconstitution

Adding sterile water, prepare a stock solution of 0.25 mg/ml. Concentration is measured by UV-Vis.

SDS-PAGE



Human INSL4 / EPIL Protein (His Tag) SDS-PAGE