

Anti-Phospho-AKT (Ser473) Rabbit antibody



Catalog Number: 168579

Product name

Anti-Phospho-AKT (Ser473) Rabbit antibody

Specificity

Human, Mouse, Rat

Antibody description

Phospho-AKT (Ser473) Rabbit monoclonal antibody

Preparation

Antigen: A synthetic phosphopeptide corresponding to residues surrounding Ser473 of human AKT1

Formulation

Supplied in 50nM Tris-Glycine(pH 7.4), 0.15M NaCl, 40%Glycerol, 0.01% sodium azide and 0.05% BSA.

Storage

Store at 4°C short term. Aliquot and store at -20°C long term. Avoid freeze / thaw cycle.

Clonality

Monoclonal

Ig Type

Rabbit IgG

Applications

WB, IHC-P, ICC/IF

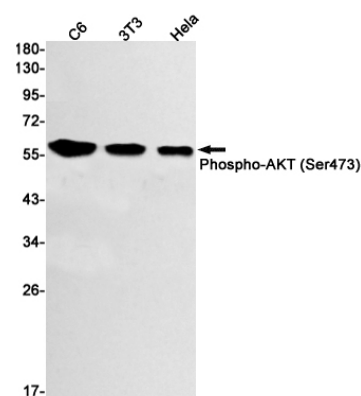
Dilutions

1:1000

1:50

1:50

Validations



Western blot detection of Phospho-AKT (Ser473) in C6,3T3,HeLa cell lysates using Phospho-AKT (Ser473) Rabbit mAb(1:1000 diluted).Predicted band size:56kDa.Observed band size:56kDa.