

# RCN2 antibody

Catalog Number: 114579

## Product name

RCN2 antibody

WB: 1:200-1:2000

IP: 1:200-1:1000

## Specificity

Human, Mouse, Rat; other species not tested.

IHC: 1:20-1:200

IF: 1:20-1:200

## Antibody description

RCN2 Rabbit Polyclonal antibody. Positive IHC detected in human gliomas tissue, human testis tissue. Positive IF detected in HepG2 cells. Positive WB detected in human brain tissue, HEK-293 cells, mouse lung tissue. Positive IP detected in mouse lung tissue. Observed molecular weight by Western-blot: 55 kDa

## Preparation

This antibody was obtained by immunization of RCN2 recombinant protein (Accession Number: NM\_002902). Purification method: Antigen affinity purified.

## Formulation

PBS with 0.1% sodium azide and 50% glycerol pH 7.3.

## Storage

Store at -20°C. DO NOT ALIQUOT

## Clonality

Polyclonal

## Ig Type

Rabbit IgG

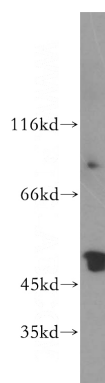
## Applications

ELISA, WB, IHC, IF, IP

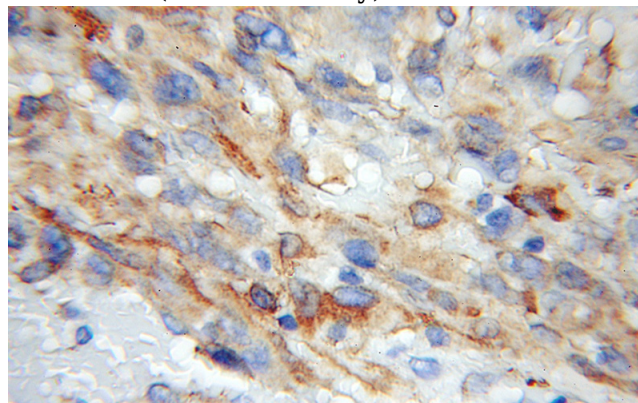
## Dilutions

Recommended Dilution:

## Validations



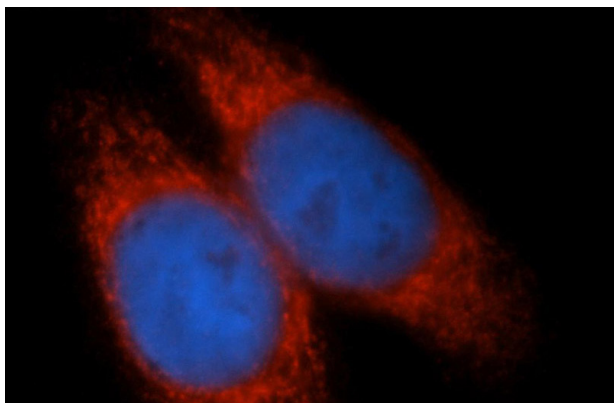
human brain tissue were subjected to SDS PAGE followed by western blot with Catalog No:114579(RCN2 antibody) at dilution of 1:400



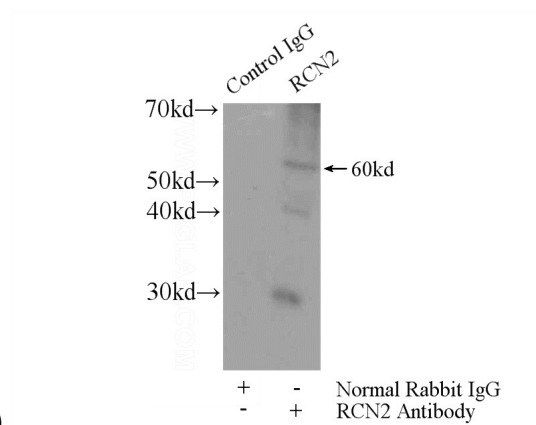
Immunohistochemical of paraffin-embedded human gliomas using Catalog No:114579(RCN2 antibody) at dilution of 1:50 (under 10x lens)

# RCN2 antibody

Catalog Number: 114579



Immunofluorescent analysis of HepG2 cells, using RCN2 antibody Catalog No:114579 at 1:50 dilution and Rhodamine-labeled goat anti-rabbit IgG (red). Blue pseudocolor = DAPI (fluorescent



DNA dye).

IP Result of anti-RCN2 (IP:Catalog No:114579, 4ug; Detection:Catalog No:114579 1:400) with mouse lung tissue lysate 2800ug.