

Human RPE / RPE2-1 (His Tag) recombinant protein



Catalog Number: 503579

General Information

Gene Name Synonym

Ribulose-5-phosphate-3-epimerase

Protein Construction

A DNA sequence encoding the human RPE isoform 1 (NP_954699.1) (Ala 2-Arg 228) was expressed, with a polyhistidine tag at the N-terminus.

Organism

Human

Expression Host

Human Cells

QC Testing

Purity

> 94 % as determined by SDS-PAGE

Endotoxin

< 1.0 EU per μg of the protein as determined by the LAL method

Stability

Samples are stable for up to twelve months from date of receipt at -70°C

Predicted N terminal

His

Molecular Mass

The recombinant human RPE consists of 246

amino acids and has a calculated molecular mass of 27 kDa. In SDS-PAGE under reducing conditions, the apparent molecular mass of rhRPE is approximately 30 kDa.

Formulation

Lyophilized from sterile 50mM Tris, 100mM NaCl, pH 8.0

1. 5 % trehalose and mannitol are added as protectants before lyophilization.
2. Please contact us for any concerns or special requirements.

Usage Guide

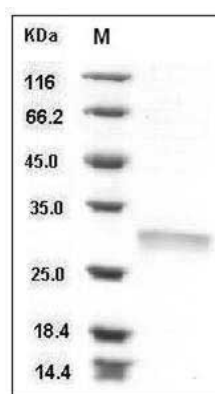
Storage

Store it under sterile conditions at -20°C to -80°C . It is recommended that the protein be aliquoted for optimal storage. Avoid repeated freeze-thaw cycles.

Reconstitution

Adding sterile water, prepare a stock solution of 0.25 mg/ml. Concentration is measured by UV-Vis.

SDS-PAGE



Human RPE / RPE2-1 Protein (His Tag) SDS-PAGE