

# CEP290 antibody



Catalog Number: 109179

## Product name

CEP290 antibody

## Immunogen

[Human CEP290 Recombinant protein \(His tag\)](#)

## Specificity

Human, Mouse, Rat; other species not tested.

## Antibody description

CEP290 Rabbit Polyclonal antibody. Positive IHC detected in human placenta tissue. Positive IF detected in HeLa cells. Positive WB detected in HEK-293 cells, HeLa cells, MCF7 cells, PC-3 cells. Positive IP detected in HeLa cells. Observed molecular weight by Western-blot: 290 kDa, 150-180 kDa, 80 kDa, 60 kDa

## Preparation

This antibody was obtained by immunization of CEP290 recombinant protein (Accession Number: BC008641). Purification method: Antigen affinity purified.

## Formulation

PBS with 0.02% sodium azide and 50% glycerol pH 7.3.

## Storage

Store at -20°C. DO NOT ALIQUOT

## Clonality

Polyclonal

## Ig Type

Rabbit IgG

## Applications

ELISA, IHC, IP, IF, WB

## Dilutions

Recommended Dilution:

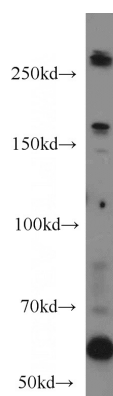
WB: 1:200-1:2000

IP: 1:500-1:5000

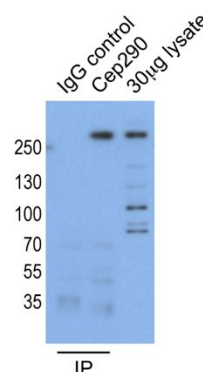
IHC: 1:20-1:200

IF: 1:50-1:500

## Validations



HEK-293 cells were subjected to SDS PAGE followed by western blot with Catalog No:109179(CEP290 antibody) at dilution of 1:500



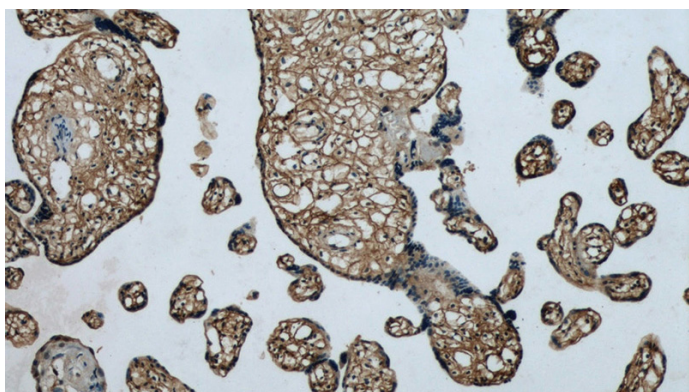
IP result of anti-CEP290(Catalog No:109179 for IP and Detection).

# CEP290 antibody

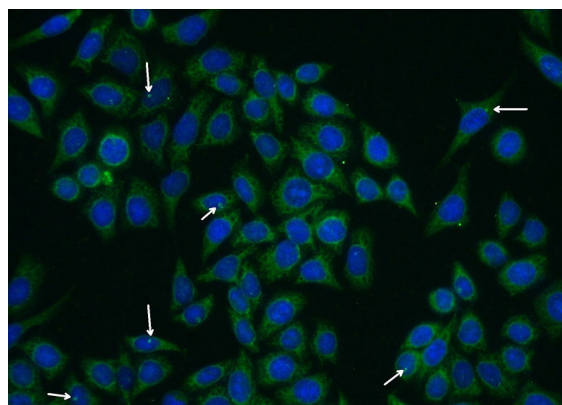


Catalog Number: 109179

---



Immunohistochemical of paraffin-embedded human placenta using Catalog No:109179(CEP290 antibody) at dilution of 1:50 (under 10x lens)



Immunofluorescent analysis of (-20oc Ethanol) fixed HeLa cells using Catalog No:109179(CEP290 Antibody) at dilution of 1:50 and Alexa Fluor 488-conjugated AffiniPure Goat Anti-Rabbit IgG(H+L)