

# TMEM231 antibody

Catalog Number: 116179

## Product name

TMEM231 antibody

## Specificity

Human; other species not tested.

## Antibody description

TMEM231 Rabbit Polyclonal antibody. Positive WB detected in Transfected HEK-293 cells. Positive IHC detected in human pancreas tissue.

## Preparation

This antibody was obtained by immunization of TMEM231 recombinant protein (Accession Number: NM\_001077418). Purification method: Antigen Affinity purified.

## Formulation

PBS with 0.02% sodium azide and 50% glycerol pH 7.3.

## Storage

Store at -20°C. DO NOT ALIQUOT

## Clonality

Polyclonal

## Ig Type

Rabbit IgG

## Applications

ELISA, IHC, WB

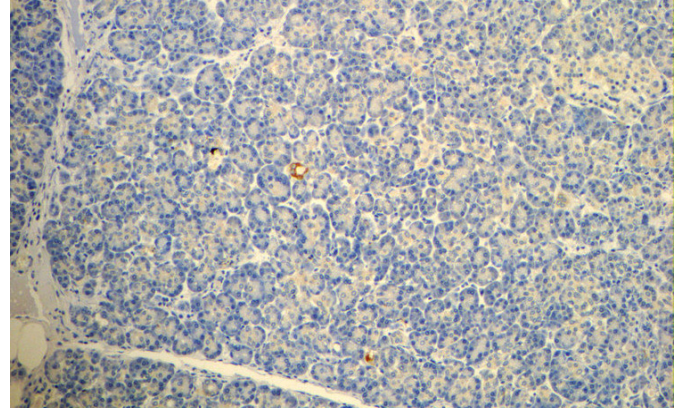
## Dilutions

Recommended Dilution:

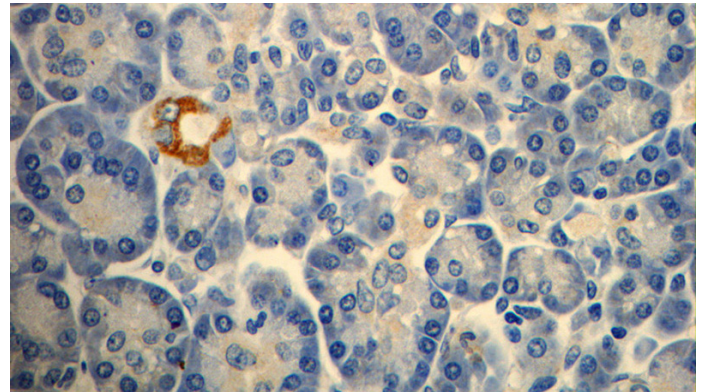
WB: 1:200-1:2000

IHC: 1:20-1:200

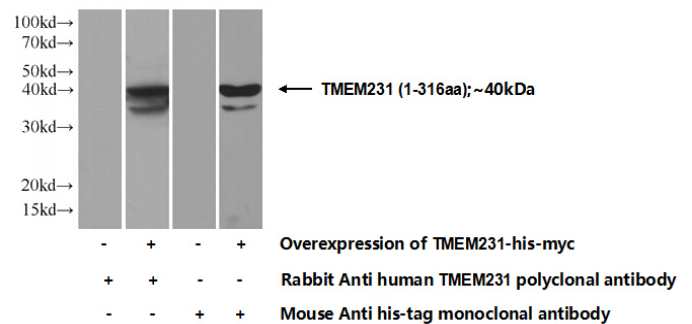
## Validations



Immunohistochemistry of paraffin-embedded human pancreas slide using Catalog No:116179(TMEM231 Antibody) at dilution of 1:50. (under 10x lens)



Immunohistochemistry of paraffin-embedded human pancreas slide using Catalog No:116179(TMEM231 Antibody) at dilution of 1:50. (under 40x lens)



Transfected HEK-293 cells were subjected to SDS PAGE followed by western blot with Catalog No:116179(TMEM231 Antibody) at dilution of 1:500