

# NHP2 antibody



Catalog Number: 113179

## Product name

NHP2 antibody

WB: 1:500-1:5000

IP: 1:200-1:2000

## Specificity

Human, Mouse, Rat; other species not tested.

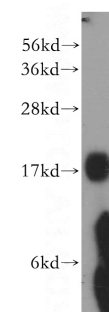
IHC: 1:20-1:200

IF: 1:10-1:100

## Antibody description

NHP2 Rabbit Polyclonal antibody. Positive IHC detected in human prostate cancer tissue. Positive IF detected in HepG2 cells. Positive WB detected in A375 cells, HeLa cells, HepG2 cells, Jurkat cells, K-562 cells. Positive IP detected in HepG2 cells. Observed molecular weight by Western-blot: 17-20kd

## Validations



## Preparation

This antibody was obtained by immunization of NHP2 recombinant protein (Accession Number: NM\_017838). Purification method: Antigen affinity purified.

A375 cells were subjected to SDS PAGE followed by western blot with Catalog No:113179(NHP2 antibody) at dilution of 1:300

## Formulation

PBS with 0.02% sodium azide and 50% glycerol pH 7.3.

## Storage

Store at -20°C. DO NOT ALIQUOT

## Clonality

Polyclonal

## Ig Type

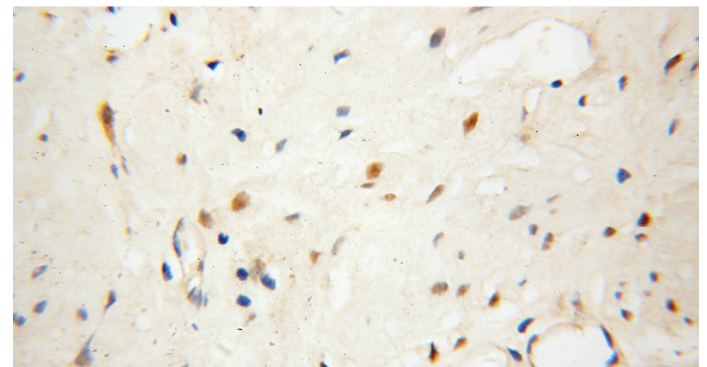
Rabbit IgG

## Applications

ELISA, WB, IHC, IF, IP

## Dilutions

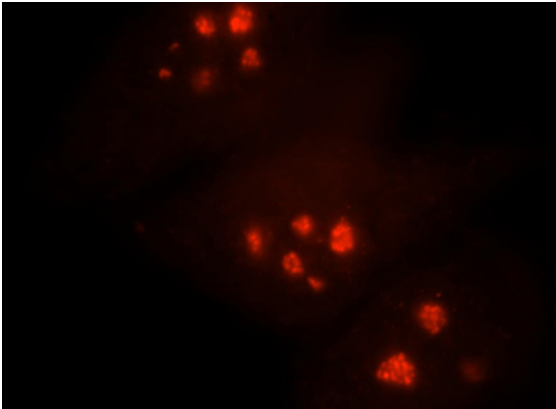
Recommended Dilution:



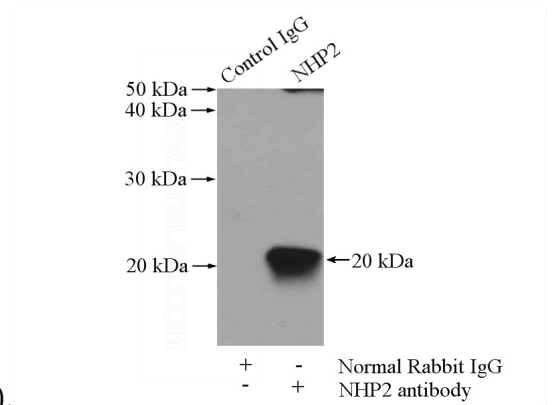
Immunohistochemical of paraffin-embedded human prostate cancer using Catalog No:113179(NHP2 antibody) at dilution of 1:100 (under 40x lens)

# NHP2 antibody

Catalog Number: 113179



Immunofluorescent analysis of HepG2 cells, using NHP2 antibody Catalog No:113179 at 1:25 dilution and Rhodamine-labeled goat anti-rabbit



IgG (red).

IP Result of anti-NHP2 (IP:Catalog No:113179, 4ug; Detection:Catalog No:113179 1:500) with HepG2 cells lysate 3600ug.