

Human HER2/ErbB2 (His & GST Tag) recombinant protein



Catalog Number: 503179

General Information

Gene Name Synonym

Metastatic lymph node gene 19 protein; Proto-oncogene Neu; Proto-oncogene c-ErbB-2; Tyrosine kinase-type cell surface receptor HER2; p185erbB2

Protein Construction

A DNA sequence encoding the cytoplasmic domain (Lys 676-Val 1255) of human ErbB2 (NP_004439.2) was fused with the N-terminal polyhistidine-tagged GST tag at the N-terminus.

Organism

Human

Expression Host

Baculovirus-Insect Cells

QC Testing

Activity

No Kinase Activity

Purity

> 75 % as determined by SDS-PAGE

Endotoxin

< 1.0 EU per μg of the protein as determined by the LAL method

Stability

Samples are stable for up to twelve months from date of receipt at -70°C

Predicted N terminal

Gln 26

Molecular Mass

The recombinant human ErbB2 (676-1255)/GST chimera consists of 817 amino acids and predicts a molecular mass of 92 kDa. It migrates as an approximately 100 kDa band in SDS-PAGE under reducing conditions.

Formulation

Lyophilized from sterile 20 mM Tris, 500 mM NaCl, 2 mM GSH, 10 % gly, pH 8.0
1. 5 % trehalose and mannitol are added as protectants before lyophilization.
2. Please contact us for any concerns or special requirements.

Usage Guide

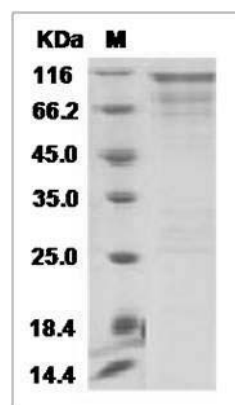
Storage

Store it under sterile conditions at -20°C to -80°C . It is recommended that the protein be aliquoted for optimal storage. Avoid repeated freeze-thaw cycles.

Reconstitution

Adding sterile water, prepare a stock solution of 0.25 mg/ml. Concentration is measured by UV-Vis.

SDS-PAGE



Human HER2 / ErbB2 / CD340 (676-1255) Protein (His & GST Tag) SDS-PAGE