

GSTA1 antibody



Catalog Number: 111179

Product name

GSTA1 antibody

WB: 1:500-1:5000

IP: 1:200-1:2000

Specificity

Human, Mouse, Rat; other species not tested.

IHC: 1:20-1:200

IF: 1:10-1:100

Antibody description

GSTA1 Rabbit Polyclonal antibody. Positive IHC detected in human liver tissue, human kidney tissue, human liver cancer tissue. Positive IF detected in HepG2 cells. Positive IP detected in mouse liver tissue. Positive WB detected in mouse liver tissue, human kidney tissue. Observed molecular weight by Western-blot: 26kd

Preparation

This antibody was obtained by immunization of GSTA1 recombinant protein (Accession Number: NM_145740). Purification method: Antigen affinity purified.

Formulation

PBS with 0.02% sodium azide and 50% glycerol pH 7.3.

Storage

Store at -20°C. DO NOT ALIQUOT

Clonality

Polyclonal

Ig Type

Rabbit IgG

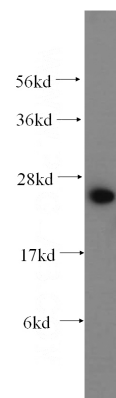
Applications

ELISA, WB, IHC, IF, IP

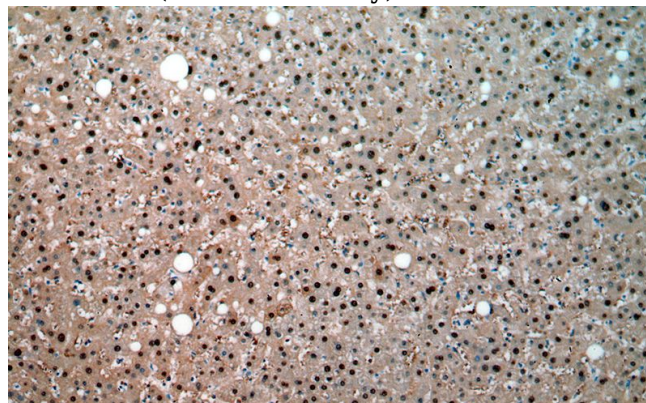
Dilutions

Recommended Dilution:

Validations



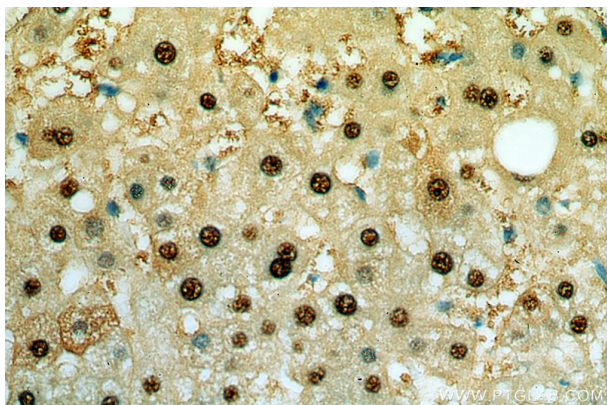
mouse liver tissue were subjected to SDS PAGE followed by western blot with Catalog No:111179(GSTA1 antibody) at dilution of 1:400



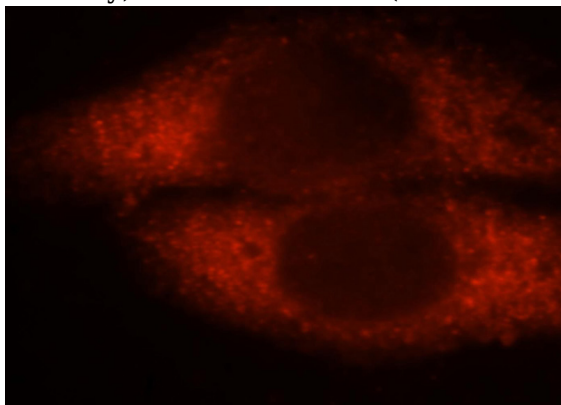
Immunohistochemical of paraffin-embedded human liver using Catalog No:111179(GSTA1 antibody) at dilution of 1:50 (under 10x lens)

GSTA1 antibody

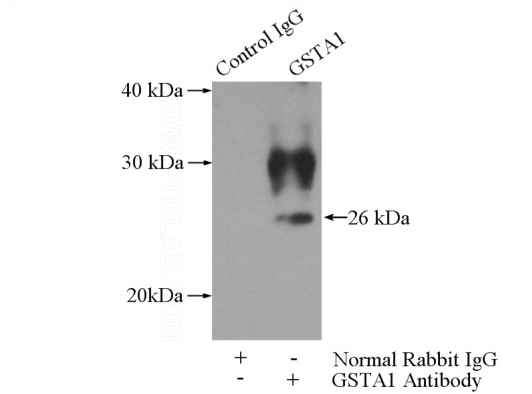
Catalog Number: 111179



Immunohistochemical of paraffin-embedded human liver using Catalog No:111179(GSTA1 antibody) at dilution of 1:50 (under 40x lens)



Immunofluorescent analysis of HepG2 cells, using GSTA1 antibody Catalog No:111179 at 1:25 dilution and Rhodamine-labeled goat anti-rabbit



IgG (red).

IP Result of anti-GSTA1 (IP:Catalog No:111179, 3ug; Detection:Catalog No:111179 1:500) with mouse liver tissue lysate 4000ug.