

SMN2 Polyclonal Antibody



Catalog Number: 161179

Product name

SMN2 Polyclonal Antibody

Specificity

Human, Mouse, Rat

Antibody description

Polyclonal antibody to SMN2

Preparation

Antigen: Recombinant fusion protein containing a sequence corresponding to amino acids 1-197 of human SMN2 (NP_059107.1).

Formulation

PBS with 0.02% sodium azide, 50% glycerol, pH7.3.

Storage

Store at -20°C. Avoid freeze / thaw cycles.

Clonality

Polyclonal

Ig Type

Rabbit IgG

Applications

WB, IHC, IF, IP

Dilutions

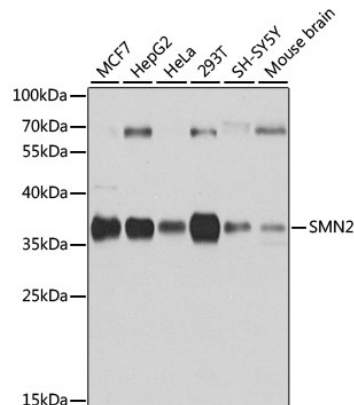
WB 1:500 - 1:2000

IHC 1:50 - 1:200

IF 1:50 - 1:200

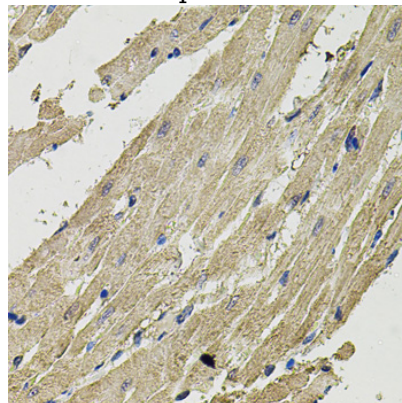
IP 1:20 - 1:50

Validations



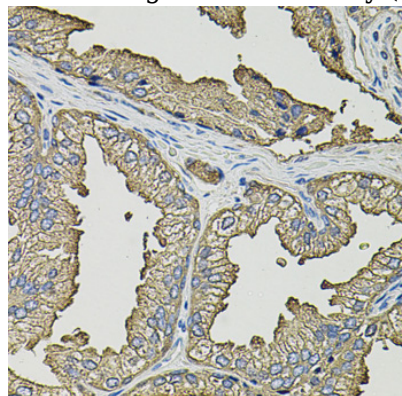
Western blot - SMN2 Polyclonal Antibody

Western blot analysis of extracts of various cell lines, using SMN2 antibody at 1:1000 dilution. Secondary antibody: HRP Goat Anti-Rabbit IgG (H+L) at 1:10000 dilution. Lysates/proteins: 25ug per lane. Blocking buffer: 3% nonfat dry milk in TBST. Detection: ECL Basic Kit. Exposure time: 10s.



Immunohistochemistry - SMN2 Polyclonal Antibody

Immunohistochemistry of paraffin-embedded rat heart using SMN2 antibody (40x lens).



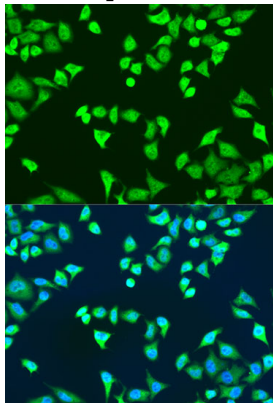
SMN2 Polyclonal Antibody



Catalog Number: 161179

Immunohistochemistry - SMN2 Polyclonal Antibody

Immunohistochemistry of paraffin-embedded human prostate using SMN2 antibody (40x lens).



Immunofluorescence - SMN2 Polyclonal Antibody

Immunofluorescence analysis of U2OS cells using SMN2 antibody at dilution of 1:100. Blue: DAPI for nuclear staining.