

# Anti-Rad50 Rabbit antibody



Catalog Number: 168879

## Product name

Anti-Rad50 Rabbit antibody

## Specificity

Human, Mouse

## Antibody description

Rad50 Rabbit monoclonal antibody

## Preparation

Antigen: A synthetic peptide of human Rad50

## Formulation

Supplied in 50nM Tris-Glycine(pH 7.4), 0.15M NaCl, 40%Glycerol, 0.01% sodium azide and 0.05% BSA.

## Storage

Store at 4°C short term. Aliquot and store at -20°C long term. Avoid freeze / thaw cycle.

## Clonality

Monoclonal

## Ig Type

Rabbit IgG

## Applications

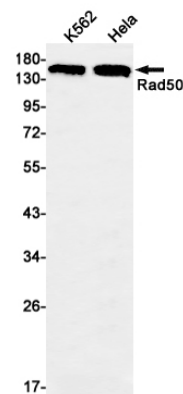
WB, ICC/IF

## Dilutions

1:2000

1:20

## Validations



Western blot detection of Rad50 in K562, HeLa cell lysates using Rad50 Rabbit mAb(1:1000 diluted). Predicted band size: 154 kDa. Observed band size: 154 kDa.