

MSX1 antibody



Catalog Number: 112879

Product name

MSX1 antibody

Specificity

Human, Mouse, Rat; other species not tested.

Antibody description

MSX1 Rabbit Polyclonal antibody. Positive WB detected in mouse skeletal muscle tissue, rat skeletal muscle tissue. Observed molecular weight by Western-blot: 31 kDa

Preparation

This antibody was obtained by immunization of MSX1 recombinant protein (Accession Number: NM_002448). Purification method: Antigen affinity purified.

Formulation

PBS with 0.1% sodium azide and 50% glycerol pH 7.3.

Storage

Store at -20°C. DO NOT ALIQUOT

Clonality

Polyclonal

Ig Type

Rabbit IgG

Applications

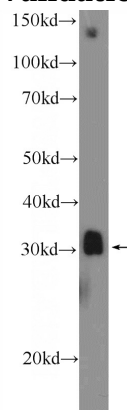
ELISA, WB

Dilutions

Recommended Dilution:

WB: 1:500-1:5000

Validations



mouse skeletal muscle tissue were subjected to SDS PAGE followed by western blot with Catalog No:112879(MSX1 Antibody) at dilution of 1:1000