

GATA2 antibody



Catalog Number: 110879

Product name

GATA2 antibody

WB: 1:200-1:1000

IHC: 1:20-1:200

Specificity

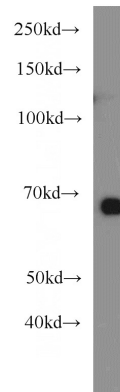
Human, Mouse, Rat; other species not tested.

IF: 1:20-1:200

Antibody description

GATA2 Rabbit Polyclonal antibody. Positive WB detected in HeLa cells, HEK-293 cells, K-562 cells, mouse heart tissue, mouse liver tissue, Raji cells, rat heart tissue, rat liver tissue. Positive IHC detected in human lymphoma tissue. Positive IF detected in HepG2 cells. Observed molecular weight by Western-blot: 60-66kd

Validations



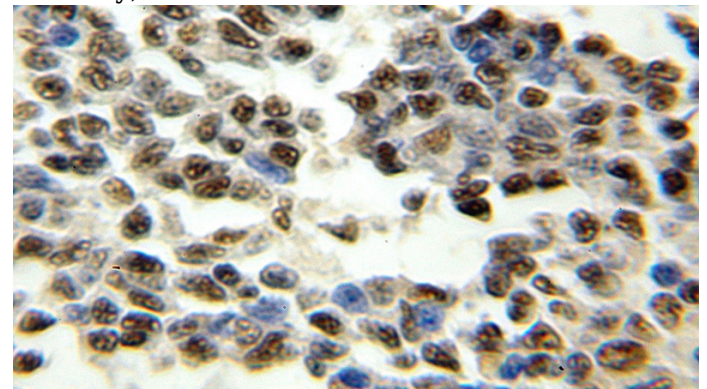
Preparation

This antibody was obtained by immunization of GATA2 recombinant protein (Accession Number: NM_001145662). Purification method: Antigen affinity purified.

HeLa cells were subjected to SDS PAGE followed by western blot with Catalog No:110879(GATA2 antibody) at dilution of 1:300

Formulation

PBS with 0.1% sodium azide and 50% glycerol pH 7.3.



Storage

Store at -20°C. DO NOT ALIQUOT

Clonality

Polyclonal

Immunohistochemical of paraffin-embedded human lymphoma using Catalog No:110879(GATA2 antibody) at dilution of 1:50 (under 10x lens)

Ig Type

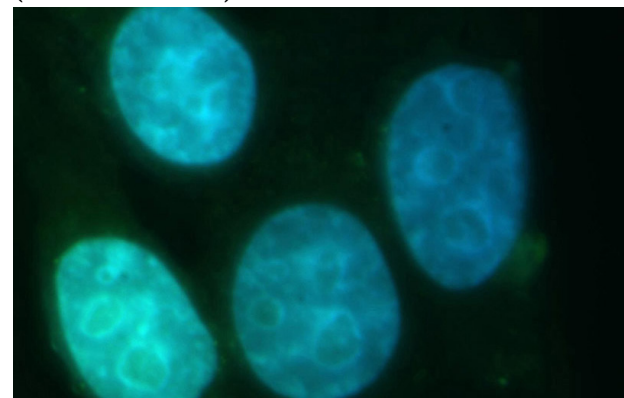
Rabbit IgG

Applications

ELISA, IHC, IF, WB

Dilutions

Recommended Dilution:



GATA2 antibody



Catalog Number: 110879

Immunofluorescent analysis of HepG2 cells, using GATA2 antibody Catalog No:110879 at 1:100 dilution and FITC-labeled donkey anti-rabbit

IgG(green). Blue pseudocolor = DAPI (fluorescent DNA dye).