

# PACSIN2 antibody

Catalog Number: 113479

## Product name

PACSIN2 antibody

WB: 1:200-1:2000

IP: 1:200-1:2000

## Specificity

Human, Mouse; other species not tested.

IHC: 1:20-1:200

IF: 1:50-1:500

## Antibody description

PACSIN2 Rabbit Polyclonal antibody. Positive IHC detected in human breast cancer tissue, human skin tissue. Positive IF detected in NIH/3T3 cells. Positive WB detected in NIH/3T3 cells, mouse heart tissue, mouse lung tissue. Positive IP detected in NIH/3T3 cells. Observed molecular weight by Western-blot: 60-65 kDa

## Preparation

This antibody was obtained by immunization of PACSIN2 recombinant protein (Accession Number: NM\_001184970). Purification method: Antigen affinity purified.

## Formulation

PBS with 0.1% sodium azide and 50% glycerol pH 7.3.

## Storage

Store at -20°C. DO NOT ALIQUOT

## Clonality

Polyclonal

## Ig Type

Rabbit IgG

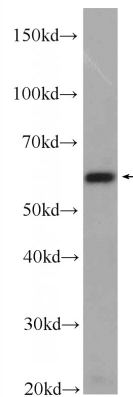
## Applications

ELISA, IHC, WB, IP, IF

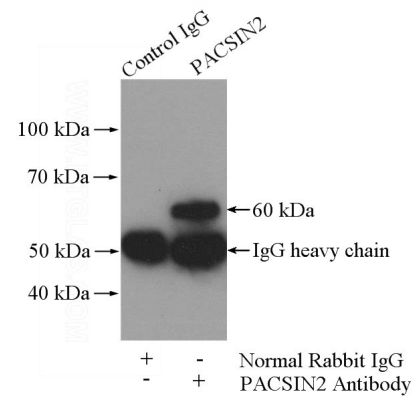
## Dilutions

Recommended Dilution:

## Validations



NIH/3T3 cells were subjected to SDS PAGE followed by western blot with Catalog No:113479(PACSIN2 Antibody) at dilution of

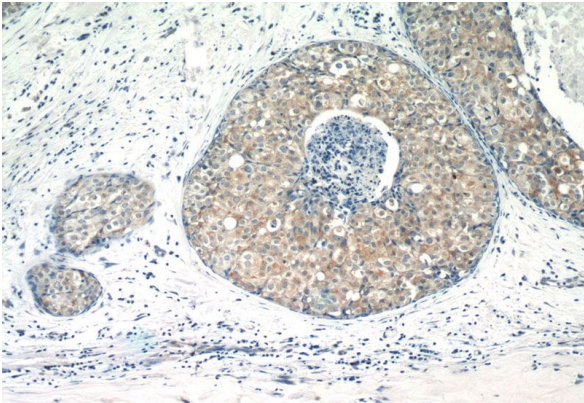


1:600

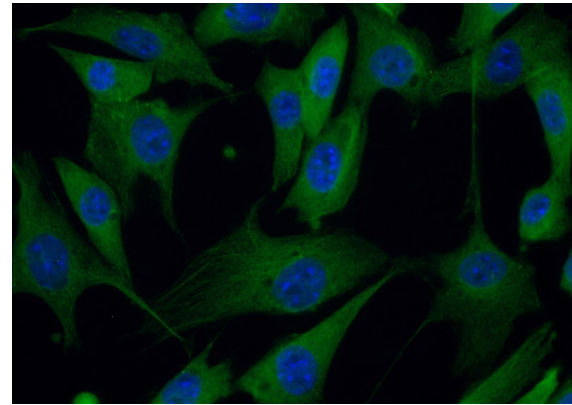
IP Result of anti-PACSIN2 (IP:Catalog No:113479, 4ug; Detection:Catalog No:113479 1:500) with NIH/3T3 cells lysate 1200ug.

# PACSIN2 antibody

Catalog Number: 113479



Immunohistochemistry of paraffin-embedded human breast cancer tissue slide using Catalog No:113479(PACSIN2 Antibody) at dilution of 1:400 (under 40x lens)



Immunofluorescent analysis of (10% Formaldehyde) fixed NIH/3T3 cells using Catalog No:113479(PACSIN2 Antibody) at dilution of 1:50 and Alexa Fluor 488-conjugated AffiniPure Goat Anti-Rabbit IgG(H+L)

Immunohistochemistry of paraffin-embedded human breast cancer tissue slide using Catalog No:113479(PACSIN2 Antibody) at dilution of 1:400 (under 10x lens)

