

# Mouse C4.4A/LYPD3 (His Tag) recombinant protein



Catalog Number: 502079

## General Information

### Gene Name Synonym

GPI-anchored metastasis-associated protein C4.4A homolog

### Protein Construction

A DNA sequence encoding the N-terminal segment of mouse LYPD3 (NP\_598504.1) (Met 1-His 287) was expressed, with a polyhistidine tag at the C-terminus.

### Organism

Mouse

### Expression Host

Human Cells

## QC Testing

### Activity

Measured by its ability to bind recombinant human Galectin3 in a functional ELISA.

### Purity

> 92 % as determined by SDS-PAGE

### Endotoxin

< 1.0 EU per  $\mu\text{g}$  of the protein as determined by the LAL method

### Stability

Samples are stable for up to twelve months from date of receipt at  $-70^{\circ}\text{C}$

### Predicted N terminal

Leu 33

## Molecular Mass

The recombinant mouse LYPD3 consists of 266 amino acids and has a predicted molecular mass of 28 kDa. The apparent molecular mass of rmLYPD3 is approximately 55-60 kDa in SDS-PAGE under reducing conditions.

## Formulation

Lyophilized from sterile PBS, pH 7.4  
1. 5 % trehalose and mannitol are added as protectants before lyophilization.  
2. Please contact us for any concerns or special requirements.

## Usage Guide

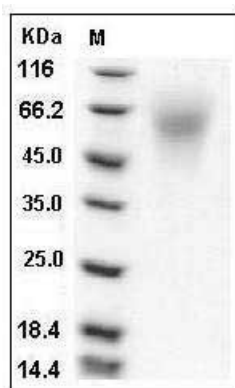
### Storage

Store it under sterile conditions at  $-20^{\circ}\text{C}$  to  $-80^{\circ}\text{C}$ . It is recommended that the protein be aliquoted for optimal storage. Avoid repeated freeze-thaw cycles.

### Reconstitution

Adding sterile water, prepare a stock solution of 0.25 mg/ml. Concentration is measured by UV-Vis.

### SDS-PAGE



Mouse C4.4A / LYPD3 Protein (His Tag) SDS-PAGE