

# Anti-TTC11/FIS1 Rabbit antibody



Catalog Number: 168769

## Product name

Anti-TTC11/FIS1 Rabbit antibody

## Specificity

Human

## Antibody description

TTC11/FIS1 Rabbit monoclonal antibody

## Preparation

Antigen: A synthetic peptide of human TTC11

## Formulation

50nM Tris-Glycine(pH 7.4), 0.15M NaCl, 40%Glycerol, 0.01% sodium azide and 0.05% BSA.

## Storage

Store at 4°C short term. Store at -20°C long term. Avoid freeze / thaw cycle.

## Clonality

Monoclonal

## Ig Type

Rabbit IgG

## Applications

WB, IHC-P, ICC/IF

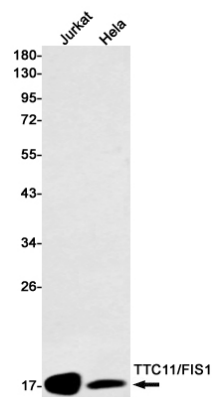
## Dilutions

WB: 1/1000-1/5000

IHC: 1/20

ICC/IF: 1/20

## Validations



Western blot detection of TTC11/FIS1 in Jurkat, HeLa cell lysates using TTC11/FIS1 Rabbit mAb(1:1000 diluted). Predicted band size: 17kDa. Observed band size: 17kDa.