

Anti-EIF5A2 antibody



Catalog Number: 104769

Product name

Anti-EIF5A2 antibody

Immunogen

[Human EIF5A2 \(His Tag\) recombinant protein](#)

Specificity

Human EIF5A2

Antibody description

Rabbit polyclonal to EIF5A2

Preparation

Produced in rabbits immunized with purified, recombinant Human EIF5A2 (rh EIF5A2; Q9GZV4; Met1-Lys153). EIF5A2 specific IgG was purified by Human EIF5A2 affinity chromatography.

Formulation

0.2 μ m filtered solution in PBS

Storage

This antibody can be stored at 2°C-8°C for one month without detectable loss of activity. Antibody products are stable for twelve months from date of receipt when stored at -20°C to -80°C.

Preservative-Free.

Sodium azide is recommended to avoid contamination (final concentration 0.05%-0.1%). It is toxic to cells and should be disposed of properly. Avoid repeated freeze-thaw cycles.

Clonality

Polyclonal

Ig Type

Rabbit IgG

Applications

ELISA, WB, IHC-P, IP

Dilutions

WB: 10-30 μ g/mL

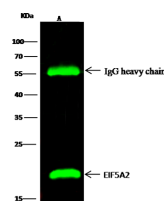
ELISA: 0.1-0.2 μ g/mL

This antibody can be used at 0.1-0.2 μ g/mL with the appropriate secondary reagents to detect Human EIF5A2. The detection limit for Human EIF5A2 is < 0.039 ng/well.

IHC-P: 0.1-1 μ g/mL

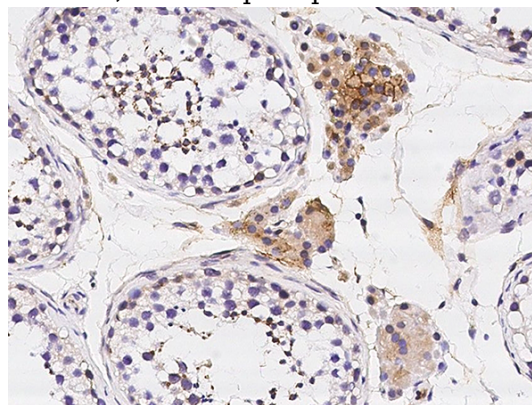
IP: 0.5-2 μ g/mg of lysate

Validations



Items	A
Sample (whole cell lysate)	293T
Sample quantity	0.5 mg
IP antibody quantity	2 μ g
Protein G agarose	15 μ l of 50% Protein G Agarose
Gel	15% SDS-PAGE reducing gel
Primary antibody	HS-EIF5A2 antibody at 10 μ g/ml
Secondary antibody	Dylight 800-labeled antibody to rabbit IgG (1:1000 dilution)

EIF5A2 Antibody, Rabbit PAb, Antigen Affinity Purified, Immunoprecipitation



EIF5A2 Antibody, Rabbit PAb, Antigen Affinity Purified, Immunohistochemistry

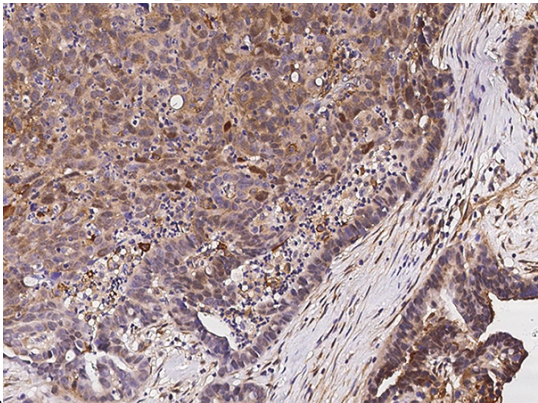
Immunochemical staining of human EIF5A2 in human testis with rabbit polyclonal antibody (0.5

Anti-EIF5A2 antibody



Catalog Number: 104769

μg/mL, formalin-fixed paraffin embedded

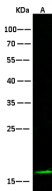


sections).

EIF5A2 Antibody, Rabbit PAb, Antigen Affinity Purified, Immunohistochemistry

Immunochemical staining of human EIF5A2 in

human ovarian cancer with rabbit polyclonal antibody (0.5 μg/mL, formalin-fixed paraffin



Lanes	
Items	A
Sample (whole cell lysate)	293T
Sample Volume (μg/lane)	30
Gel	13% SDS-PAGE reducing gel
Recommended Concentration	10-30 μg/ml
Secondary Antibody	Dylight 800-labeled Antibody To Rabbit IgG (H+L), at 1:5000 dilution.
Explanation	Developed using Odyssey imaging system. Predicted band size : 14 kDa Observed band size : 15 kDa Additional bands at : 55 kDa and 36 kDa (We are unsure as to the identity of these extra bands. They are possible non-specific bindings).

embedded sections).

EIF5A2 Antibody, Rabbit PAb, Antigen Affinity Purified, Western blot