

Human Placental Lactogen / CSH1 (His Tag) recombinant protein



Catalog Number: 500769

General Information

Gene Name Synonym

HCG1749481, isoform CRA_c; HCG1749481, isoform CRA_e; HCG1749481, isoform CRA_i; cDNA FLJ75407, highly similar to Homo sapiens chorionic somatomammotropin hormone 1 (placental lactogen) (CSH1), transcript variant 1

Protein Construction

A DNA sequence encoding the human CSH1 (NP_001308.1) (Met 1-Phe 217) was expressed, fused with a polyhistidine tag at the C-terminus.

Organism

Human

Expression Host

Human Cells

QC Testing

Purity

> 87 % as determined by SDS-PAGE

Endotoxin

< 1.0 EU per μg of the protein as determined by the LAL method

Stability

Samples are stable for up to twelve months from date of receipt at -70°C

Predicted N terminal

Val 27

Molecular Mass

The secreted recombinant human CSH1 consists of 202 amino acids and has a calculated molecular mass of 23.7 kDa. It migrates as an approximately 25 kDa band in SDS-PAGE under reducing conditions.

Formulation

Lyophilized from sterile PBS, pH 7.4

1. 5 % trehalose and mannitol are added as protectants before lyophilization.

2. Please contact us for any concerns or special requirements.

Usage Guide

Storage

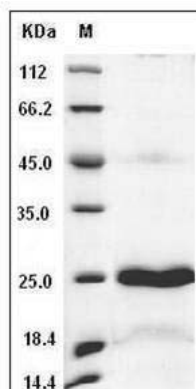
Store it under sterile conditions at -20°C to -80°C .

It is recommended that the protein be aliquoted for optimal storage. Avoid repeated freeze-thaw cycles.

Reconstitution

Adding sterile water, prepare a stock solution of 0.25 mg/ml. Concentration is measured by UV-Vis.

SDS-PAGE



Human Placental Lactogen / CSH1 Protein (His Tag) SDS-PAGE