

# Mouse CRELD2 (His Tag) recombinant protein



Catalog Number: 503369

## General Information

### Protein Construction

A DNA sequence encoding the mouse CRELD2 (NP\_083996.1) (Met1-Leu350) was expressed with a C-terminal polyhistidine tag.

### Organism

Mouse

### Expression Host

Human Cells

## QC Testing

### Activity

Measured by its ability to induce adhesion of ATDC5 mouse chondrogenic cells. When cells are added to mCRELD2-Fc coated plates (0.625 µg/mL, 100 µL/well), approximately 20% will adhere specifically after 60 minutes at 37 °C.

### Purity

> 95 % as determined by SDS-PAGE

### Endotoxin

< 1.0 EU per µg of the protein as determined by the LAL method

### Stability

Samples are stable for up to twelve months from date of receipt at -70°C

### Predicted N terminal

Ser 23

## Molecular Mass

The recombinant mouse CRELD2 comprises 339 amino acids and has a predicted molecular mass of 37.5 kDa. The apparent molecular mass of the protein is approximately 51.3 kDa in SDS-PAGE under reducing conditions.

## Formulation

Lyophilized from sterile PBS, pH 7.4.  
1. 5 % trehalose and mannitol are added as protectants before lyophilization.  
2. Please contact us for any concerns or special requirements.

## Usage Guide

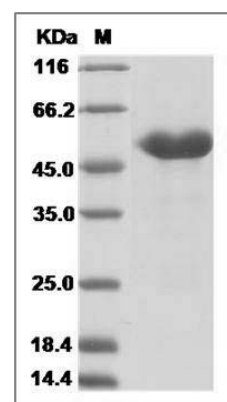
### Storage

Store it under sterile conditions at -20°C to -80°C. It is recommended that the protein be aliquoted for optimal storage. Avoid repeated freeze-thaw cycles.

### Reconstitution

Adding sterile water, prepare a stock solution of 0.25 mg/ml. Concentration is measured by UV-Vis.

## SDS-PAGE



Mouse CRELD2 Protein (His Tag) SDS-PAGE