

MAD2L2 antibody

Catalog Number: 112369

Product name

MAD2L2 antibody

Specificity

Human, Mouse, Rat; other species not tested.

Antibody description

MAD2L2 Rabbit Polyclonal antibody. Positive WB detected in human brain tissue, A375 cells, fetal human brain tissue, HEK-293 cells, HeLa cells, human colon tissue, human kidney tissue, K-562 cells, mouse brain tissue. Positive IP detected in mouse brain tissue. Observed molecular weight by Western-blot: 24kd

Preparation

This antibody was obtained by immunization of MAD2L2 recombinant protein (Accession Number: NM_001127325). Purification method: Antigen affinity purified.

Formulation

PBS with 0.1% sodium azide and 50% glycerol pH 7.3.

Storage

Store at -20°C. DO NOT ALIQUOT

Clonality

Polyclonal

Ig Type

Rabbit IgG

Applications

ELISA, WB, IP

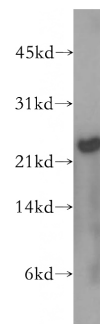
Dilutions

Recommended Dilution:

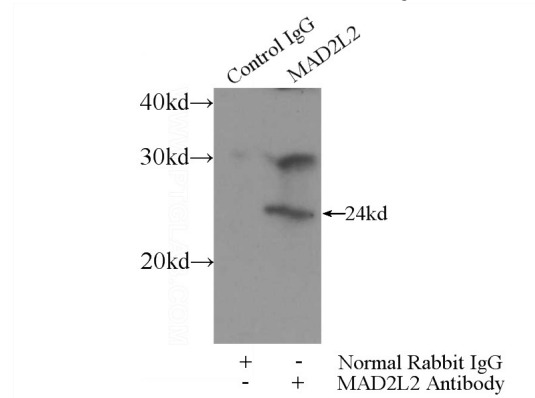
WB: 1:500-1:5000

IP: 1:200-1:2000

Validations



human brain tissue were subjected to SDS PAGE followed by western blot with Catalog No:112369(MAD2L2 antibody) at dilution of 1:500



IP Result of anti-MAD2L2 (IP:Catalog No:112369, 3ug; Detection:Catalog No:112369 1:500) with mouse brain tissue lysate 3600ug.