

ERO1L antibody

Catalog Number: 110369

Product name

ERO1L antibody

IP: 1:200-1:1000

IHC: 1:20-1:200

Specificity

Human, Mouse, Rat; other species not tested.

Antibody description

ERO1L Rabbit Polyclonal antibody. Positive WB detected in mouse ovary tissue, A431 cells. Positive IP detected in L02 cells. Positive FC detected in HeLa cells. Positive IHC detected in human pancreas cancer tissue. Observed molecular weight by Western-blot: 54 kDa

Preparation

This antibody was obtained by immunization of ERO1L recombinant protein (Accession Number: NM_014584). Purification method: Antigen affinity purified.

Formulation

PBS with 0.02% sodium azide and 50% glycerol pH 7.3.

Storage

Store at -20°C. DO NOT ALIQUOT

Clonality

Polyclonal

Ig Type

Rabbit IgG

Applications

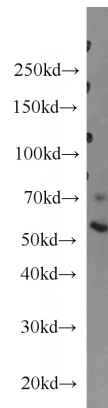
ELISA, IHC, WB, FC, IP

Dilutions

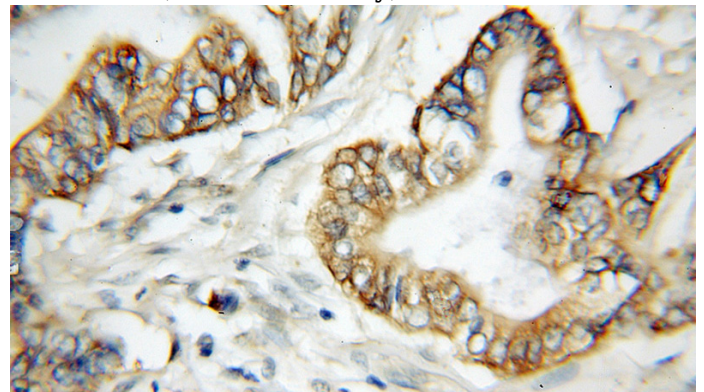
Recommended Dilution:

WB: 1:200-1:1000

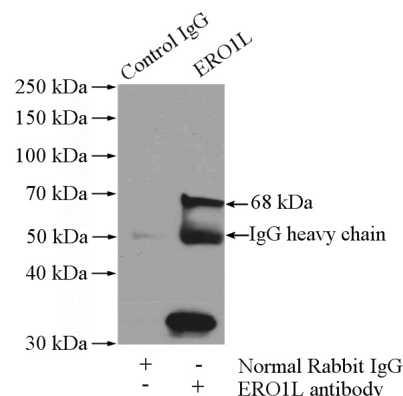
Validations



mouse ovary tissue were subjected to SDS PAGE followed by western blot with Catalog No:110369(ERO1L antibody) at dilution of 1:100



Immunohistochemical of paraffin-embedded human pancreas cancer using Catalog No:110369(ERO1L antibody) at dilution of 1:50 (under 10x lens)



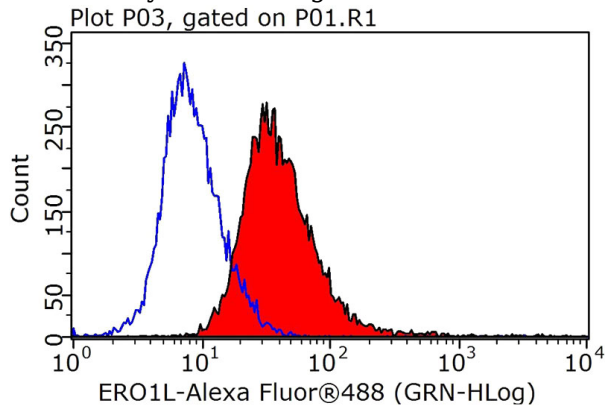
IP Result of anti-ERO1L (IP:Catalog No:110369,

ERO1L antibody



Catalog Number: 110369

4ug; Detection:Catalog No:110369 1:300) with L02 cells lysate 1400ug.



1X10⁶ HeLa cells were stained with 0.2ug ERO1L antibody (Catalog No:110369, red) and control antibody (blue). Fixed with 90% MeOH blocked with 3% BSA (30 min). Alexa Fluor 488-conjugated AffiniPure Goat Anti-Rabbit IgG(H+L) with dilution 1:1000.